

# βIII-Tubulin Rabbit mAb

Catalog No.: A17913

Recombinant

24 Publications

## Basic Information

### Observed MW

55 kDa

### Calculated MW

50 kDa

### Category

Primary antibody

### Applications

WB, IF/ICC, IF-F, IF-P, IHC-P, ELISA

### Cross-Reactivity

Human, Mouse, Rat

### CloneNo number

ARC0456

## Background

This gene encodes a class III member of the beta tubulin protein family. Beta tubulins are one of two core protein families (alpha and beta tubulins) that heterodimerize and assemble to form microtubules. This protein is primarily expressed in neurons and may be involved in neurogenesis and axon guidance and maintenance. Mutations in this gene are the cause of congenital fibrosis of the extraocular muscles type 3. Alternate splicing results in multiple transcript variants. A pseudogene of this gene is found on chromosome 6.

## Recommended Dilutions

**WB** 1:80000 - 1:400000**IF/ICC** 1:200 - 1:2000**IF-F** 1:200 - 1:1000**IF-P** 1:200 - 1:2000**IHC-P** 1:200 - 1:4000

**ELISA** Recommended starting concentration is 1 µg/mL. Please optimize the concentration based on your specific assay requirements.

## Immunogen Information

### Gene ID

10381

### Swiss Prot

Q13509

### Immunogen

Synthetic peptide. This information is considered to be commercially sensitive.

### Synonyms

CDCBM; FEOM3; TUBB4; CDCBM1; CFEOM3; beta-4; CFEOM3A; βIII-Tubulin

## Product Information

### Source

Rabbit

### Isotype

IgG

### Purification

Affinity purification

### Storage

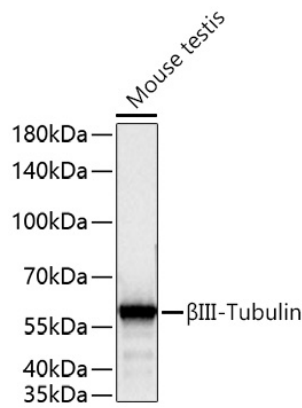
Store at -20°C. Avoid freeze / thaw cycles.

Buffer: PBS containing 50% glycerol and 0.05% BSA, preserved with proclin300 or sodium azide (as specified on the Certificate of Analysis), pH 7.3.

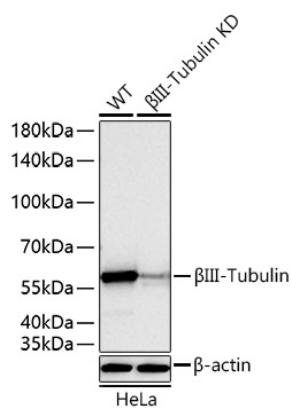
## Contact

 | 400-999-6126 | [cn.market@abclonal.com.cn](mailto:cn.market@abclonal.com.cn) | [www.abclonal.com.cn](http://www.abclonal.com.cn)

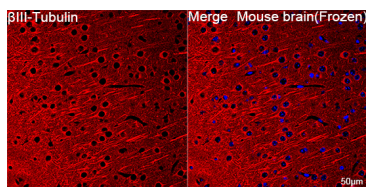
Validation Data



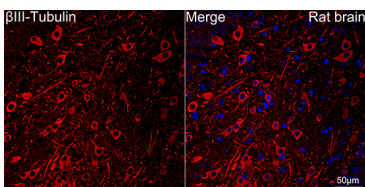
Western blot analysis of lysates from Mouse testis using βIII-Tubulin Rabbit mAb (A17913) at 1:200000 dilution incubated overnight at 4°C.  
Secondary antibody: HRP-conjugated Goat anti-Rabbit IgG (H+L) (AS014) at 1:10000 dilution.  
Lysates/proteins: 25 µg per lane.  
Blocking buffer: 3% nonfat dry milk in TBST.  
Detection: ECL Basic Kit (RM00020).  
Exposure time: 1 s.



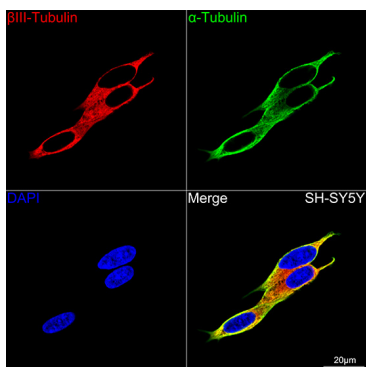
Western blot analysis of lysates from wild type (WT) and SRD5A2 knockdown (KD) HeLa cells using βIII-Tubulin Rabbit mAb (A17913) at 1:200000 dilution incubated overnight at 4°C.  
Secondary antibody: HRP-conjugated Goat anti-Rabbit IgG (H+L) (AS014) at 1:10000 dilution.  
Lysates/proteins: 25 µg per lane.  
Blocking buffer: 3% nonfat dry milk in TBST.  
Detection: ECL Basic Kit (RM00020).  
Exposure time: 30 s.



Confocal imaging of frozen sections Mouse brain tissue using βIII-Tubulin Rabbit mAb (A17913, dilution 1:200) followed by a further incubation with Cy3-conjugated Goat anti-Rabbit IgG (H+L) (AS007, dilution 1:500) (Red). DAPI was used for nuclear staining (Blue). Microwave antigen retrieval performed with 0.01M Citrate Buffer (pH 6.0) prior to IF staining. Objective: 40x.

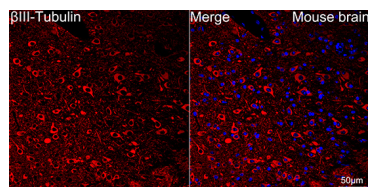


Confocal imaging of paraffin-embedded Rat brain tissue using βIII-Tubulin Rabbit mAb (A17913, dilution 1:200) followed by a further incubation with Cy3 Goat Anti-Rabbit IgG (H+L) (AS007, dilution 1:500) (Red). DAPI was used for nuclear staining (Blue). Objective: 40x. Perform microwave antigen retrieval with 0.01M citrate buffer (pH 6.0) prior to IF staining.

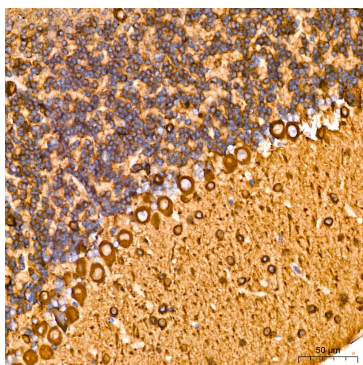


Confocal imaging of SH-SY5Y cells using βIII-Tubulin Rabbit mAb (A17913, dilution 1:200) followed by a further incubation with Cy3 Goat Anti-Rabbit IgG (H+L) (AS007, dilution 1:500) (Red). The cells were counterstained with α-Tubulin Mouse mAb (AC012, dilution 1:400) followed by incubation with ABflo® 488-conjugated Goat Anti-Mouse IgG (H+L) Ab (AS076, dilution 1:500) (Green). DAPI was used for nuclear staining (Blue). Objective: 100x.

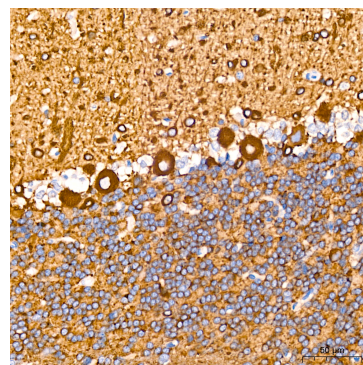
## Validation Data



Confocal imaging of paraffin-embedded Mouse brain tissue using  $\beta$ III-Tubulin Rabbit mAb (A17913, dilution 1:200) followed by a further incubation with Cy3 Goat Anti-Rabbit IgG (H+L) (AS007, dilution 1:500) (Red). DAPI was used for nuclear staining (Blue). Objective: 40x. Perform high pressure antigen retrieval with 0.01M citrate buffer (pH 6.0) prior to IF staining.



Immunohistochemistry analysis of paraffin-embedded Mouse brain tissue using  $\beta$ III-Tubulin Rabbit mAb (A17913) at a dilution of 1:200 (40x lens). High pressure antigen retrieval performed with 0.01M Citrate buffer (pH 6.0) prior to IHC staining.



Immunohistochemistry analysis of paraffin-embedded Rat brain tissue using  $\beta$ III-Tubulin Rabbit mAb (A17913) at a dilution of 1:200 (40x lens). High pressure antigen retrieval performed with 0.01M Citrate buffer (pH 6.0) prior to IHC staining.