

Bmi1 Rabbit mAb

Catalog No.: A17914 **Recombinant** **1 Publications**

Basic Information

Observed MW

40kDa

Calculated MW

37kDa

Category

Primary antibody

Applications

ELISA,WB

Cross-Reactivity

Human, Rat

CloneNo number

ARC0376

Background

This gene encodes a ring finger protein that is major component of the polycomb group complex 1 (PRC1). This complex functions through chromatin remodeling as an essential epigenetic repressor of multiple regulatory genes involved in embryonic development and self-renewal in somatic stem cells. This protein also plays a central role in DNA damage repair. This gene is an oncogene and aberrant expression is associated with numerous cancers and is associated with resistance to certain chemotherapies. A pseudogene of this gene is found on chromosome X. Read-through transcription also exists between this gene and the upstream COMM domain containing 3 (COMMD3) gene.

Recommended Dilutions

WB 1:500 - 1:1000

Immunogen Information

Gene ID

648

Swiss Prot

P35226

Immunogen

A synthetic peptide corresponding to a sequence within amino acids 227-326 of human Bmi1 (P35226).

Synonyms

PCGF4; RNF51; FLV12/BMI1; flvi-2/bmi-1; Bmi1

Contact

 | 400-999-6126 | cn.market@abclonal.com.cn | www.abclonal.com.cn

Product Information

Source

Rabbit

Isotype

IgG

Purification

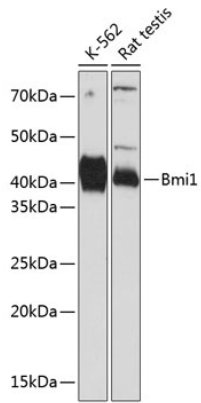
Affinity purification

Storage

Store at -20°C. Avoid freeze / thaw cycles.

Buffer: PBS with 0.02% sodium azide,0.05% BSA,50% glycerol,pH7.3.

Validation Data



Western blot analysis of extracts of various cell lines, using Bmi1 antibody (A17914) at 1:1000 dilution.
Secondary antibody: HRP Goat Anti-Rabbit IgG (H+L) (AS014) at 1:10000 dilution.
Lysates/proteins: 25µg per lane.
Blocking buffer: 3% nonfat dry milk in TBST.
Detection: ECL Basic Kit (RM00020).
Exposure time: 60s.