

STAT5A/STAT5B Rabbit pAb

Catalog No.: A17930

Basic Information

Observed MW

90kDa

Calculated MW

Category

Primary antibody

Applications

ELISA, WB

Cross-Reactivity

Mouse

Background

Carries out a dual signal transduction and activation of transcription. Mediates cellular responses to the cytokine KITLG/SCF and other growth factors. Mediates cellular responses to ERBB4. May mediate cellular responses to activated FGFR1, FGFR2, FGFR3 and FGFR4. Binds to the GAS element and activates PRL-induced transcription. Regulates the expression of milk proteins during lactation.

Recommended Dilutions

WB 1:500 - 1:2000

Immunogen Information

Gene ID

6776/6777

Swiss Prot

Immunogen

A synthetic peptide corresponding to a sequence within amino acids 700-787 of human STAT5A/STAT5B (NP_036580.2).

Synonyms

MGF; STAT5; stat5a/stat5b; STAT5A/STAT5B

Contact

 | 400-999-6126

 | cn.market@abclonal.com.cn

 | www.abclonal.com.cn

Product Information

Source

Rabbit

Isotype

IgG

Purification

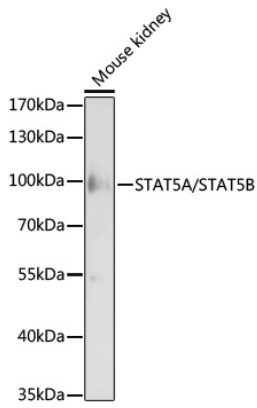
Affinity purification

Storage

Store at -20°C. Avoid freeze / thaw cycles.

Buffer: PBS with 0.01% thimerosal, 50% glycerol, pH7.3.

Validation Data



Western blot analysis of lysates from mouse kidney, using STAT5A/STAT5B Rabbit pAb (A17930) at 1:1000 dilution.

Secondary antibody: HRP Goat Anti-Rabbit IgG (H+L) (AS014) at 1:10000 dilution.

Lysates/proteins: 25µg per lane.

Blocking buffer: 3% nonfat dry milk in TBST.

Detection: ECL Enhanced Kit (RM00021).

Exposure time: 30s.