

PDCD1LG2 Rabbit pAb

Catalog No.: A17943 **1 Publications**

Basic Information

Observed MW

45-60kDa

Calculated MW

31kDa

Category

Primary antibody

Applications

ELISA, WB, IF/ICC

Cross-Reactivity

Human, Mouse, Rat

Background

Involved in negative regulation of activated T cell proliferation; negative regulation of interferon-gamma production; and negative regulation of interleukin-10 production. Predicted to be located in plasma membrane. Predicted to be active in external side of plasma membrane. Biomarker of pulmonary tuberculosis.

Recommended Dilutions

WB	1:500 - 1:1000
IF/ICC	1:50 - 1:200

Immunogen Information

Gene ID

80380

Swiss Prot

Q9BQ51

Immunogen

A synthetic peptide corresponding to a sequence within amino acids 100-200 of human PDCD1LG2 (NP_079515.2).

Synonyms

B7DC; Btdc; PDL2; CD273; PD-L2; PDCD1L2; bA574F11.2; PDCD1LG2

Contact

	400-999-6126
	cn.market@abclonal.com.cn
	www.abclonal.com.cn

Product Information

Source

Rabbit

Isotype

IgG

Purification

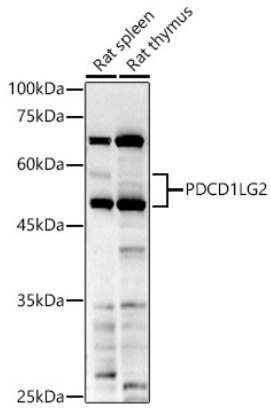
Affinity purification

Storage

Store at -20°C. Avoid freeze / thaw cycles.

Buffer: PBS with 0.05% proclin300, 50% glycerol, pH7.3.

Validation Data



Western blot analysis of extracts of various cell lines, using PDCD1LG2 antibody (A17943) at 1:1000 dilution.

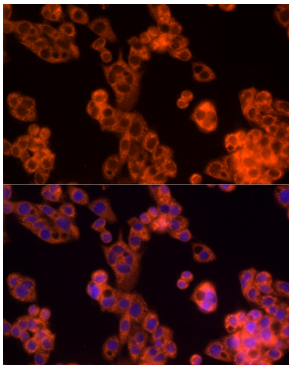
Secondary antibody: HRP Goat Anti-Rabbit IgG (H+L) (AS014) at 1:10000 dilution.

Lysates/proteins: 25µg per lane.

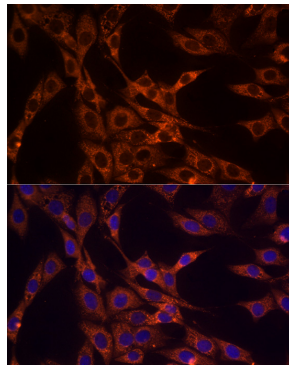
Blocking buffer: 3% nonfat dry milk in TBST.

Detection: ECL Basic Kit (RM00020).

Exposure time: 180s.



Immunofluorescence analysis of HepG2 cells using PDCD1LG2 Rabbit pAb (A17943) at dilution of 1:50 (40x lens). Blue: DAPI for nuclear staining.



Immunofluorescence analysis of NIH/3T3 cells using PDCD1LG2 Rabbit pAb (A17943) at dilution of 1:50 (40x lens). Blue: DAPI for nuclear staining.