

MT-ATP6 Rabbit pAb

Catalog No.: A17960 **3 Publications**

Basic Information

Observed MW

20 kDa

Calculated MW

25 kDa

Category

Primary antibody

Applications

WB,IF/ICC,IHC-P,ELISA

Cross-Reactivity

Human, Mouse, Rat

Background

Contributes to proton-transporting ATP synthase activity, rotational mechanism. Involved in mitochondrial ATP synthesis coupled proton transport. Part of mitochondrial proton-transporting ATP synthase complex. Implicated in Leber hereditary optic neuropathy; NARP syndrome; Parkinson's disease; multiple sclerosis; and systemic lupus erythematosus.

Recommended Dilutions

WB 1:500 - 1:5000

IF/ICC 1:50 - 1:100

IHC-P 1:50 - 1:100

ELISA Recommended starting concentration is 1 µg/mL. Please optimize the concentration based on your specific assay requirements.

Immunogen Information

Gene ID

4508

Swiss Prot

P00846

Immunogen

Synthetic peptide. This information is considered to be commercially sensitive.

Synonyms

ATPase6; MTATP6; ATP6; MT-ATP6

Contact

 | 400-999-6126

 | cn.market@abclonal.com.cn

 | www.abclonal.com.cn

Product Information

Source

Rabbit

Isotype

IgG

Purification

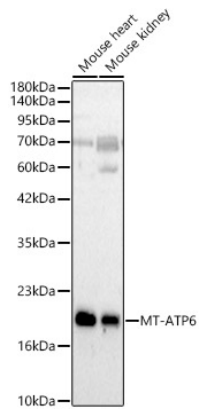
Affinity purification

Storage

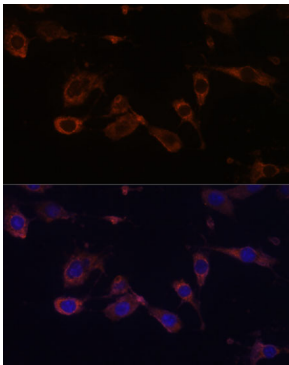
Store at -20°C. Avoid freeze / thaw cycles.

Buffer: PBS containing 50% glycerol, preserved with proclin300 or sodium azide (as specified on the Certificate of Analysis), pH 7.3.

Validation Data



Western blot analysis of various lysates, using MT-ATP6 Rabbit pAb (A17960) at 1:700 dilution. Secondary antibody: HRP-conjugated Goat anti-Rabbit IgG (H+L) (AS014) at 1:10000 dilution. Lysates/proteins: 25µg per lane. Blocking buffer: 3% nonfat dry milk in TBST. Detection: ECL Basic Kit (RM00020). Exposure time: 90s.



Immunofluorescence analysis of L929 cells using MT-ATP6 Rabbit pAb (A17960) at dilution of 1:100 (40x lens). Secondary antibody: Cy3-conjugated Goat anti-Rabbit IgG (H+L) (AS007) at 1:500 dilution. Blue: DAPI for nuclear staining.