

MT-ND3 Rabbit pAb

Catalog No.: A17969 **5 Publications**

Basic Information

Observed MW

15kDa

Calculated MW

13kDa

Category

Primary antibody

Applications

WB, IHC-P, IF/ICC, IP, ELISA

Cross-Reactivity

Human, Mouse, Rat

Background

Enables NADH dehydrogenase (ubiquinone) activity. Involved in mitochondrial electron transport, NADH to ubiquinone. Part of mitochondrial respiratory chain complex I. Implicated in Leber hereditary optic neuropathy; Leigh disease; and Parkinson's disease.

Recommended Dilutions

WB 1:100 - 1:500

IHC-P 1:50 - 1:200

IF/ICC 1:50 - 1:200

IP 0.5µg-4µg antibody for
200µg-400µg extracts of
whole cells

ELISA Recommended starting
concentration is 1 µg/mL.
Please optimize the
concentration based on
your specific assay
requirements.

Immunogen Information

Gene ID

4537

Swiss Prot

P03897

Immunogen

A synthetic peptide corresponding to a sequence within amino acids 1-70 of human MT-ND3 (YP_003024033.1).

Synonyms

MTND3; ND3; MT-ND3

Product Information

Source

Rabbit

Isotype

IgG

Purification

Affinity purification

Storage

Store at -20°C. Avoid freeze / thaw cycles.

Buffer: PBS with 0.05% proclin300, 50% glycerol, pH7.3.

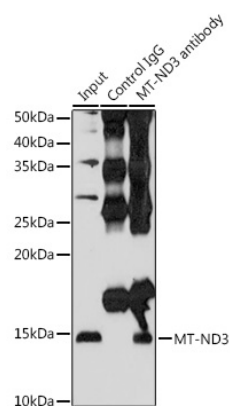
Contact

☎ | 400-999-6126

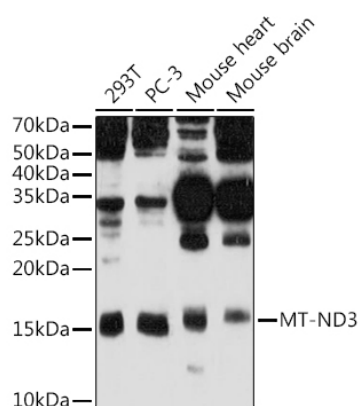
✉ | cn.market@abclonal.com.cn

🌐 | www.abclonal.com.cn

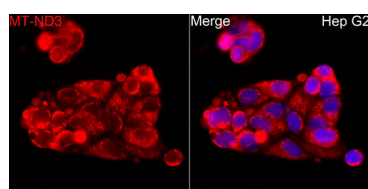
Validation Data



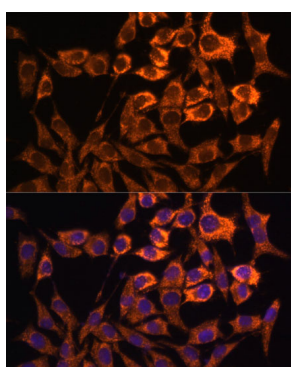
Immunoprecipitation analysis of 200 µg extracts of HeLa cells using 3 µg MT-ND3 antibody (A17969). Western blot was performed from the immunoprecipitate using MT-ND3 antibody (A17969) at a dilution of 1:500.



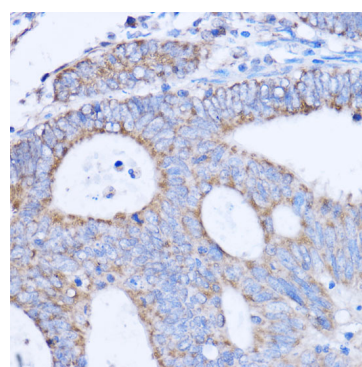
Western blot analysis of various lysates using MT-ND3 Rabbit pAb (A17969) at 1:500 dilution. Secondary antibody: HRP-conjugated Goat anti-Rabbit IgG (H+L) (AS014) at 1:10000 dilution. Lysates/proteins: 25µg per lane. Blocking buffer: 3% nonfat dry milk in TBST. Detection: ECL Basic Kit (RM00020). Exposure time: 90s.



Immunofluorescence analysis of HepG2 cells using MT-ND3 Rabbit pAb (A17969) at dilution of 1:100 (40x lens). Secondary antibody: Cy3-conjugated Goat anti-Rabbit IgG (H+L) (AS007) at 1:500 dilution. Blue: DAPI for nuclear staining.

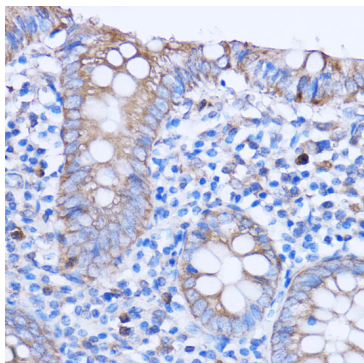


Immunofluorescence analysis of L929 cells using MT-ND3 Rabbit pAb (A17969) at dilution of 1:100. Secondary antibody: Cy3-conjugated Goat anti-Rabbit IgG (H+L) (AS007) at 1:500 dilution. Blue: DAPI for nuclear staining.

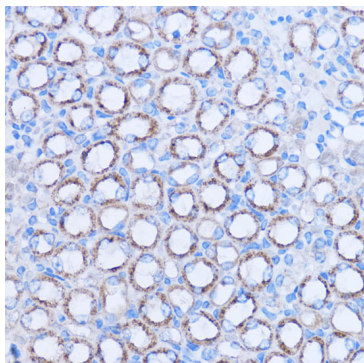


Immunohistochemistry analysis of paraffin-embedded Human colon carcinoma using MT-ND3 Rabbit pAb (A17969) at dilution of 1:100 (40x lens). Microwave antigen retrieval performed with 0.01M PBS Buffer (pH 7.2) prior to IHC staining.

Validation Data



Immunohistochemistry analysis of paraffin-embedded Human appendix using MT-ND3 Rabbit pAb (A17969) at dilution of 1:100 (40x lens). Microwave antigen retrieval performed with 0.01M PBS Buffer (pH 7.2) prior to IHC staining.



Immunohistochemistry analysis of paraffin-embedded Mouse kidney using MT-ND3 Rabbit pAb (A17969) at dilution of 1:100 (40x lens). Microwave antigen retrieval performed with 0.01M PBS Buffer (pH 7.2) prior to IHC staining.