

MT-ND4L Rabbit pAb

Catalog No.: A17971

Basic Information

Observed MW

11kDa

Calculated MW

11kDa

Category

Primary antibody

Applications

ELISA, WB, IF/ICC

Cross-Reactivity

Mouse, Rat

Background

Predicted to enable NADH dehydrogenase (ubiquinone) activity. Predicted to be located in mitochondrial inner membrane. Implicated in Leber hereditary optic neuropathy and diabetes mellitus.

Recommended Dilutions

WB	1:500 - 1:1000
IF/ICC	1:50 - 1:200

Immunogen Information

Gene ID

4539

Swiss Prot

P03901

Immunogen

A synthetic peptide corresponding to a sequence within amino acids 40 to the C-terminus of human MT-ND4L (AXQ02532.1).

Synonyms

MTND4L; ND4L; MT-ND4L

Contact

 | 400-999-6126

 | cn.market@abclonal.com.cn

 | www.abclonal.com.cn

Product Information

Source

Rabbit

Isotype

IgG

Purification

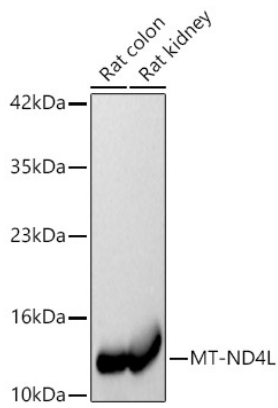
Affinity purification

Storage

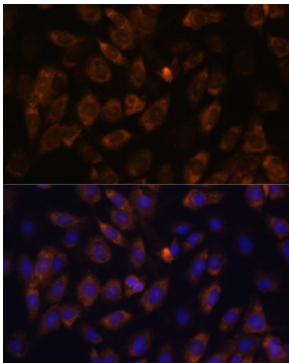
Store at -20°C. Avoid freeze / thaw cycles.

Buffer: PBS with 0.01% thimerosal, 50% glycerol, pH7.3.

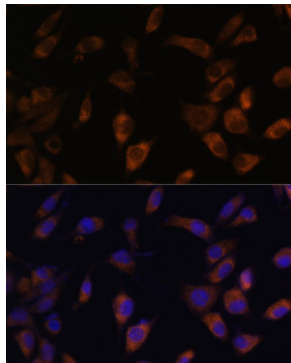
Validation Data



Western blot analysis of various lysates, using MT-ND4L Rabbit pAb (A17971) at 1:600 dilution.
Secondary antibody: HRP Goat Anti-Rabbit IgG (H+L) (AS014) at 1:10000 dilution.
Lysates/proteins: 25ug per lane.
Blocking buffer: 3% nonfat dry milk in TBST.
Detection: ECL Basic Kit (RM00020).
Exposure time: 60s.



Immunofluorescence analysis of C6 cells using MT-ND4L antibody (A17971) at dilution of 1:100. Blue: DAPI for nuclear staining.



Immunofluorescence analysis of L929 cells using MT-ND4L antibody (A17971) at dilution of 1:100. Blue: DAPI for nuclear staining.