

ZDHHC2 Rabbit pAb

Catalog No.: A17979

Basic Information

Observed MW

50kDa

Calculated MW

42kDa

Category

Primary antibody

Applications

ELISA, WB

Cross-Reactivity

Human, Rat

Background

Enables protein homodimerization activity and protein-cysteine S-palmitoyltransferase activity. Involved in several processes, including peptidyl-L-cysteine S-palmitoylation; regulation of protein catabolic process; and regulation of protein localization to plasma membrane. Located in Golgi apparatus and endoplasmic reticulum membrane.

Recommended Dilutions

WB 1:500 - 1:2000

Immunogen Information

Gene ID

51201

Swiss Prot

Q9UIJ5

Immunogen

A synthetic peptide corresponding to a sequence within amino acids 270-367 of human ZDHHC2 (NP_057437.1).

Synonyms

DHHC2; ZNF372; ZDHHC2

Contact

☎ | 400-999-6126

✉ | cn.market@abclonal.com.cn

🌐 | www.abclonal.com.cn

Product Information

Source

Rabbit

Isotype

IgG

Purification

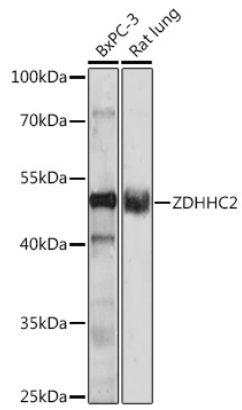
Affinity purification

Storage

Store at -20°C. Avoid freeze / thaw cycles.

Buffer: PBS with 0.01% thimerosal, 50% glycerol, pH7.3.

Validation Data



Western blot analysis of various lysates using ZDHHC2 Rabbit pAb (A17979) at 1:1000 dilution.
Secondary antibody: HRP Goat Anti-Rabbit IgG (H+L) (AS014) at 1:10000 dilution.
Lysates/proteins: 25 μ g per lane.
Blocking buffer: 3% nonfat dry milk in TBST.
Detection: ECL Enhanced Kit (RM00021).
Exposure time: 90s.