

ZDHHC4 Rabbit pAb

Catalog No.: A17980

Basic Information

Observed MW

42kDa

Calculated MW

40kDa

Category

Primary antibody

Applications

ELISA, WB

Cross-Reactivity

Human, Mouse, Rat

Background

Predicted to enable protein-cysteine S-palmitoyltransferase activity. Predicted to be involved in peptidyl-L-cysteine S-palmitoylation and protein targeting to membrane. Located in Golgi apparatus and endoplasmic reticulum.

Recommended Dilutions

WB 1:500 - 1:2000

Immunogen Information

Gene ID

55146

Swiss Prot

Q9NPG8

Immunogen

A synthetic peptide corresponding to a sequence within amino acids 110-210 of human ZDHHC4 (NP_060576.1).

Synonyms

ZNF374; ZDHHC4

Contact

☎ | 400-999-6126

✉ | cn.market@abclonal.com.cn

🌐 | www.abclonal.com.cn

Product Information

Source

Rabbit

Isotype

IgG

Purification

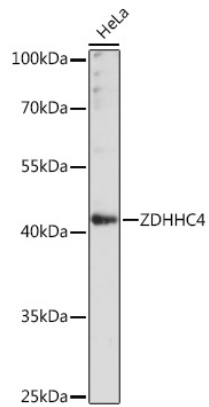
Affinity purification

Storage

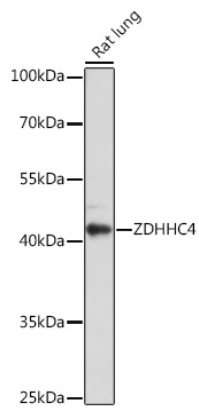
Store at -20°C. Avoid freeze / thaw cycles.

Buffer: PBS with 0.01% thimerosal, 50% glycerol, pH7.3.

Validation Data



Western blot analysis of lysates from HeLa cells, using ZDHHC4 Rabbit pAb (A17980) at 1:1000 dilution.
Secondary antibody: HRP Goat Anti-Rabbit IgG (H+L) (AS014) at 1:10000 dilution.
Lysates/proteins: 25µg per lane.
Blocking buffer: 3% nonfat dry milk in TBST.
Detection: ECL Basic Kit (RM00020).
Exposure time: 60s.



Western blot analysis of lysates from Rat lung, using ZDHHC4 Rabbit pAb (A17980) at 1:1000 dilution.
Secondary antibody: HRP Goat Anti-Rabbit IgG (H+L) (AS014) at 1:10000 dilution.
Lysates/proteins: 25µg per lane.
Blocking buffer: 3% nonfat dry milk in TBST.
Detection: ECL Basic Kit (RM00020).
Exposure time: 3min.