

# ZDHC7 Rabbit pAb

Catalog No.: A17981

## Basic Information

### Observed MW

33kDa

### Calculated MW

35kDa

### Category

Primary antibody

### Applications

ELISA, WB

### Cross-Reactivity

Human, Mouse

## Background

Enables protein-cysteine S-palmitoyltransferase activity. Involved in several processes, including peptidyl-L-cysteine S-palmitoylation; polarized epithelial cell differentiation; and regulation of signal transduction. Located in Golgi apparatus and nucleoplasm.

## Recommended Dilutions

WB 1:500 - 1:2000

## Immunogen Information

### Gene ID

55625

### Swiss Prot

Q9NXF8

### Immunogen

A synthetic peptide corresponding to a sequence within amino acids 210 to the C-terminus of human ZDHC7 (NP\_060210.2).

### Synonyms

DHHC7; SERZ1; SERZ-B; ZNF370; ZDHC7

## Contact

☎ | 400-999-6126

✉ | [cn.market@abclonal.com.cn](mailto:cn.market@abclonal.com.cn)

🌐 | [www.abclonal.com.cn](http://www.abclonal.com.cn)

## Product Information

### Source

Rabbit

### Isotype

IgG

### Purification

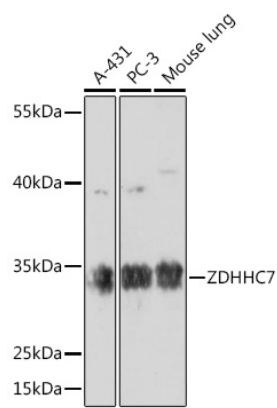
Affinity purification

### Storage

Store at -20°C. Avoid freeze / thaw cycles.

Buffer: PBS with 0.01% thimerosal, 50% glycerol, pH7.3.

# Validation Data



Western blot analysis of various lysates using ZDHHC7 Rabbit pAb (A17981) at 1:1000 dilution.  
Secondary antibody: HRP Goat Anti-Rabbit IgG (H+L) (AS014) at 1:10000 dilution.  
Lysates/proteins: 25µg per lane.  
Blocking buffer: 3% nonfat dry milk in TBST.  
Detection: ECL Basic Kit (RM00020).  
Exposure time: 60s.