

ZDHHC20 Rabbit pAb

Catalog No.: A17982

Basic Information

Observed MW

42kDa

Calculated MW

42kDa

Category

Primary antibody

Applications

ELISA, WB

Cross-Reactivity

Human, Mouse, Rat

Background

Enables protein-cysteine S-palmitoyltransferase activity and zinc ion binding activity. Involved in peptidyl-L-cysteine S-palmitoylation. Located in intracellular membrane-bounded organelle and plasma membrane. Is integral component of Golgi membrane.

Recommended Dilutions

WB 1:500 - 1:2000

Immunogen Information

Gene ID

253832

Swiss Prot

Q5W0Z9

Immunogen

A synthetic peptide corresponding to a sequence within amino acids 270-365 of human ZDHHC20 (NP_001316988.1).

Synonyms

DHHC20; DHHC-20; 4933421L13Rik; ZDHHC20

Contact

☎ | 400-999-6126

✉ | cn.market@abclonal.com.cn

🌐 | www.abclonal.com.cn

Product Information

Source

Rabbit

Isotype

IgG

Purification

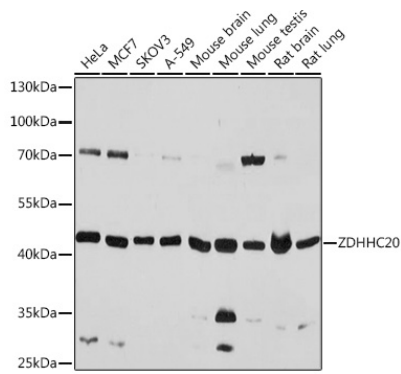
Affinity purification

Storage

Store at -20°C. Avoid freeze / thaw cycles.

Buffer: PBS with 0.01% thimerosal, 50% glycerol, pH7.3.

Validation Data



Western blot analysis of various lysates using ZDHHC20 Rabbit pAb (A17982) at 1:1000 dilution.
Secondary antibody: HRP Goat Anti-Rabbit IgG (H+L) (AS014) at 1:10000 dilution.
Lysates/proteins: 25 μ g per lane.
Blocking buffer: 3% nonfat dry milk in TBST.
Detection: ECL Basic Kit (RM00020).
Exposure time: 3s.