

pan-Mono-Methyl Arginine Motif Rabbit pAb

Catalog No.: A17984

Basic Information

Observed MW

10-130kDa

Calculated MW

Category

Primary antibody

Applications

ELISA, WB

Cross-Reactivity

Human, Mouse, Rat

Background

Recommended Dilutions

WB 1:100 - 1:500

Immunogen Information

Gene ID


Swiss Prot

Immunogen

A synthetic peptide corresponding to a sequence containing monomethylated R.

Synonyms

Contact

 | 400-999-6126

 | cn.market@abclonal.com.cn

 | www.abclonal.com.cn

Product Information

Source

Rabbit

Isotype

IgG

Purification

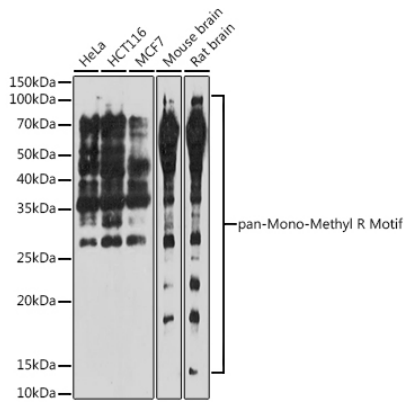
Affinity purification

Storage

Store at -20°C. Avoid freeze / thaw cycles.

Buffer: PBS with 0.01% thimerosal, 50% glycerol, pH7.3.

Validation Data



Western blot analysis of various lysates using pan-Mono-Methyl R Motif Rabbit pAb (A17984) at 1:500 dilution.

Secondary antibody: HRP-conjugated Goat anti-Rabbit IgG (H+L) (AS014) at 1:10000 dilution.

Lysates/proteins: 25µg per lane.

Blocking buffer: 3% nonfat dry milk in TBST.

Detection: ECL Enhanced Kit (RM00021).

Exposure time: 180s.