

# DUSP8 Rabbit pAb

Catalog No.: A17990

## Basic Information

### Observed MW

66kDa

### Calculated MW

66kDa

### Category

Primary antibody

### Applications

ELISA,WB,IF/ICC

### Cross-Reactivity

Human, Mouse, Rat

## Background

The protein encoded by this gene is a member of the dual specificity protein phosphatase subfamily. These phosphatases inactivate their target kinases by dephosphorylating both the phosphoserine/threonine and phosphotyrosine residues. They negatively regulate members of the mitogen-activated protein (MAP) kinase superfamily (MAPK/ERK, SAPK/JNK, p38), which is associated with cellular proliferation and differentiation. Different members of the family of dual specificity phosphatases show distinct substrate specificities for various MAP kinases, different tissue distribution and subcellular localization, and different modes of inducibility of their expression by extracellular stimuli. This gene product inactivates SAPK/JNK and p38, is expressed predominantly in the adult brain, heart, and skeletal muscle, is localized in the cytoplasm, and is induced by nerve growth factor and insulin. An intronless pseudogene for DUSP8 is present on chromosome 10q11.2.

## Recommended Dilutions

<b>WB</b>	1:1000 - 1:5000
<b>IF/ICC</b>	1:500 - 1:1000

## Immunogen Information

### Gene ID

1850

### Swiss Prot

Q13202

### Immunogen

A synthetic peptide corresponding to a sequence within amino acids 1-100 of human DUSP8 (NP\_004411.2).

### Synonyms

HB5; HVH8; HVH-5; C11orf81; DUSP8

## Contact

☎ | 400-999-6126

✉ | [cn.market@abclonal.com.cn](mailto:cn.market@abclonal.com.cn)

🌐 | [www.abclonal.com.cn](http://www.abclonal.com.cn)

## Product Information

### Source

Rabbit

### Isotype

IgG

### Purification

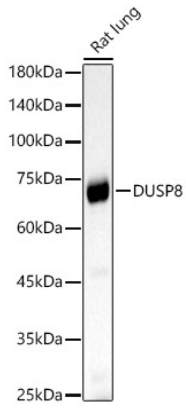
Affinity purification

### Storage

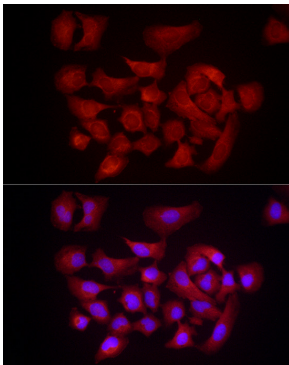
Store at -20°C. Avoid freeze / thaw cycles.

Buffer: PBS with 0.01% thimerosal, 50% glycerol, pH7.3.

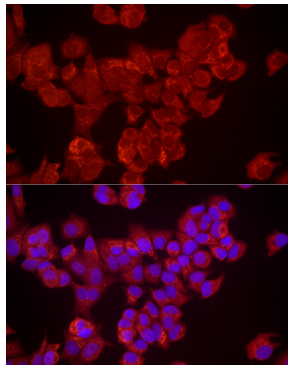
## Validation Data



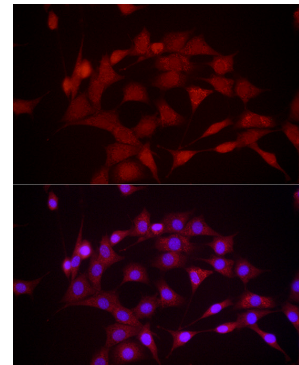
Western blot analysis of Rat lung, using DUSP8 Rabbit pAb (A17990) at 1:2000 dilution.  
Secondary antibody: HRP Goat Anti-Rabbit IgG (H+L) (AS014) at 1:10000 dilution.  
Lysates/proteins: 25µg per lane.  
Blocking buffer: 3% nonfat dry milk in TBST.  
Detection: ECL Basic Kit (RM00020).  
Exposure time: 60s.



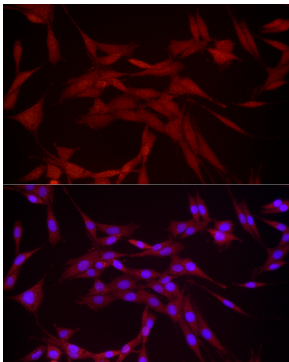
Immunofluorescence analysis of HeLa cells using DUSP8 Rabbit pAb (A17990) at dilution of 1:1000 (40x lens). Blue: DAPI for nuclear staining.



Immunofluorescence analysis of MCF7 cells using DUSP8 Rabbit pAb (A17990) at dilution of 1:1000 (40x lens). Blue: DAPI for nuclear staining.



Immunofluorescence analysis of NIH/3T3 cells using DUSP8 Rabbit pAb (A17990) at dilution of 1:1000 (40x lens). Blue: DAPI for nuclear staining.



Immunofluorescence analysis of PC-12 cells using DUSP8 Rabbit pAb (A17990) at dilution of 1:1000 (40x lens). Blue: DAPI for nuclear staining.