

[KO Validated] CNPase Rabbit pAb

Catalog No.: A18009 **KO Validated**

Basic Information

Observed MW

47kDa

Calculated MW

48kDa

Category

Primary antibody

Applications

ELISA, WB

Cross-Reactivity

Human, Mouse, Rat

Background

Predicted to enable 2',3'-cyclic-nucleotide 3'-phosphodiesterase activity. Involved in substantia nigra development. Located in several cellular components, including extracellular space; microtubule; and plasma membrane. Implicated in hypomyelinating leukodystrophy 20; multiple sclerosis; and schizophrenia. Biomarker of alcoholic liver cirrhosis; multiple sclerosis; and restless legs syndrome.

Recommended Dilutions

WB 1:500 - 1:2000

Immunogen Information

Gene ID

1267

Swiss Prot

P09543

Immunogen

Recombinant fusion protein containing a sequence corresponding to amino acids 152-421 of human CNPasease (NP_149124.3).

Synonyms

CNP1; HLD20; se

Contact

 | 400-999-6126

 | cn.market@abclonal.com.cn

 | www.abclonal.com.cn

Product Information

Source

Rabbit

Isotype

IgG

Purification

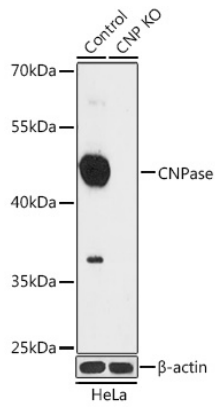
Affinity purification

Storage

Store at -20°C. Avoid freeze / thaw cycles.

Buffer: PBS with 0.01% thimerosal, 50% glycerol, pH7.3.

Validation Data



Western blot analysis of lysates from wild type (WT) and CNPase knockout (KO) HeLa cells, using [KO Validated] CNPase Rabbit pAb (A18009) at 1:1000 dilution.

Secondary antibody: HRP Goat Anti-Rabbit IgG (H+L) (AS014) at 1:10000 dilution.

Lysates/proteins: 25 μ g per lane.

Blocking buffer: 3% nonfat dry milk in TBST.

Detection: ECL Basic Kit (RM00020).

Exposure time: 90s.