

[KO Validated] STRADA Rabbit pAb

Catalog No.: A18012 **KO** Validated

Basic Information

Observed MW

48kDa

Calculated MW

48kDa

Category

Primary antibody

Applications

WB, ELISA

Cross-Reactivity

Human, Mouse

Background

The protein encoded by this gene contains a STE20-like kinase domain, but lacks several residues that are critical for catalytic activity, so it is termed a 'pseudokinase'. The protein forms a heterotrimeric complex with serine/threonine kinase 11 (STK11, also known as LKB1) and the scaffolding protein calcium binding protein 39 (CAB39, also known as MO25). The protein activates STK11 leading to the phosphorylation of both proteins and excluding STK11 from the nucleus. The protein is necessary for STK11-induced G1 cell cycle arrest. A mutation in this gene has been shown to result in polyhydramnios, megalencephaly, and symptomatic epilepsy (PMSE) syndrome. Multiple transcript variants encoding different isoforms have been found for this gene. Additional transcript variants have been described but their full-length nature is not known.

Recommended Dilutions

WB 1:1000 - 1:2000**ELISA** Recommended starting concentration is 1 µg/mL. Please optimize the concentration based on your specific assay requirements.

Immunogen Information

Gene ID

92335

Swiss Prot

Q7RTN6

Immunogen

Recombinant protein (or fragment). This information is considered to be commercially sensitive.

Synonyms

LYK5; PMSE; Stlk; STRAD; NY-BR-96; STRAD alpha; DA

Contact

 | 400-999-6126 | cn.market@abclonal.com.cn | www.abclonal.com.cn

Product Information

Source

Rabbit

Isotype

IgG

Purification

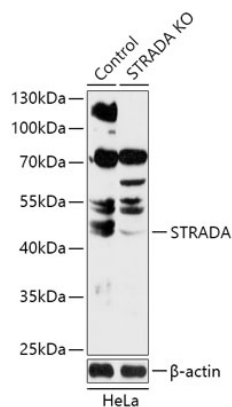
Affinity purification

Storage

Store at -20°C. Avoid freeze / thaw cycles.

Buffer: PBS with 0.01% thimerosal, 50% glycerol, pH7.3.

Validation Data



Western blot analysis of lysates from wild type (WT) and STRADA knockout (KO) HeLa cells, using [KO Validated] STRADA Rabbit pAb (A18012) at 1:1000 dilution.

Secondary antibody: HRP-conjugated Goat anti-Rabbit IgG (H+L) (AS014) at 1:10000 dilution.

Lysates/proteins: 25 μ g per lane.

Blocking buffer: 3% nonfat dry milk in TBST.

Detection: ECL Basic Kit (RM00020).

Exposure time: 3min.