

# [KO Validated] Catalase Rabbit pAb

Catalog No.: A18018 **KO** **Validated** **2 Publications**

## Basic Information

### Observed MW

60kDa

### Calculated MW

60kDa

### Category

Primary antibody

### Applications

ELISA, WB

### Cross-Reactivity

Human, Mouse, Rat

## Background

This gene encodes catalase, a key antioxidant enzyme in the body's defense against oxidative stress. Catalase is a heme enzyme that is present in the peroxisome of nearly all aerobic cells. Catalase converts the reactive oxygen species hydrogen peroxide to water and oxygen and thereby mitigates the toxic effects of hydrogen peroxide. Oxidative stress is hypothesized to play a role in the development of many chronic or late-onset diseases such as diabetes, asthma, Alzheimer's disease, systemic lupus erythematosus, rheumatoid arthritis, and cancers. Polymorphisms in this gene have been associated with decreases in catalase activity but, to date, acatalasemia is the only disease known to be caused by this gene.

## Recommended Dilutions

WB 1:1000 - 1:3000

## Immunogen Information

### Gene ID

847

### Swiss Prot

P04040

### Immunogen

Recombinant fusion protein containing a sequence corresponding to amino acids 1-225 of human Catalase (NP\_001743.1).

### Synonyms

CAT; catalase; MGC138422; MGC138424; se

## Contact

 | 400-999-6126 | [cn.market@abclonal.com.cn](mailto:cn.market@abclonal.com.cn) | [www.abclonal.com.cn](http://www.abclonal.com.cn)

## Product Information

### Source

Rabbit

### Isotype

IgG

### Purification

Affinity purification

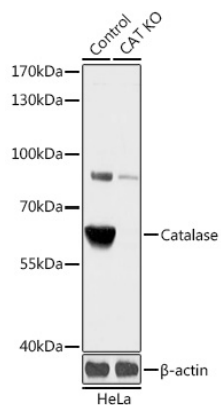
### Storage

Store at -20°C. Avoid freeze / thaw cycles.

Buffer: PBS with 0.01% thimerosal, 50% glycerol, pH 7.3.

## Validation Data

---



Western blot analysis of lysates from wild type (WT) and Catalasease knockout (KO) HeLa cells, using [KO Validated] Catalase Rabbit pAb (A18018) at 1:3000 dilution.

Secondary antibody: HRP-conjugated Goat anti-Rabbit IgG (H+L) (AS014) at 1:10000 dilution.

Lysates/proteins: 25 $\mu$ g per lane.

Blocking buffer: 3% nonfat dry milk in TBST.

Detection: ECL Basic Kit (RM00020).

Exposure time: 10s.