

# [KO Validated] EIF3H Rabbit pAb

Catalog No.: A18026 **KO** **Validated** **1 Publications**

## Basic Information

### Observed MW

40kDa

### Calculated MW

40kDa

### Category

Primary antibody

### Applications

WB,IF/ICC,ELISA

### Cross-Reactivity

Human, Mouse, Rat

## Background

Enables deubiquitinase activity. Contributes to translation initiation factor activity. Involved in negative regulation of proteasomal ubiquitin-dependent protein catabolic process and translational initiation. Located in extracellular exosome and membrane. Part of eukaryotic translation initiation factor 3 complex. Implicated in breast cancer; prostate cancer; and prostate carcinoma. Biomarker of prostate cancer.

## Recommended Dilutions

**WB** 1:500 - 1:2000

**IF/ICC** 1:50 - 1:200

**ELISA** Recommended starting concentration is 1 µg/mL. Please optimize the concentration based on your specific assay requirements.

## Immunogen Information

### Gene ID

8667

### Swiss Prot

O15372

### Immunogen

Recombinant protein (or fragment). This information is considered to be commercially sensitive.

### Synonyms

EIF3S3; eIF3-p40; eIF3-gamma; 3H

## Contact

 | 400-999-6126

 | [cn.market@abclonal.com.cn](mailto:cn.market@abclonal.com.cn)

 | [www.abclonal.com.cn](http://www.abclonal.com.cn)

## Product Information

### Source

Rabbit

### Isotype

IgG

### Purification

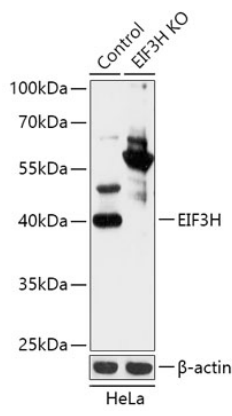
Affinity purification

### Storage

Store at -20°C. Avoid freeze / thaw cycles.

Buffer: PBS with 0.01% thimerosal, 50% glycerol, pH7.3.

# Validation Data



Western blot analysis of lysates from wild type (WT) and EIF3H knockout (KO) HeLa cells, using [KO Validated] EIF3H Rabbit pAb (A18026) at 1:3000 dilution.  
Secondary antibody: HRP-conjugated Goat anti-Rabbit IgG (H+L) (AS014) at 1:10000 dilution.  
Lysates/proteins: 25µg per lane.  
Blocking buffer: 3% nonfat dry milk in TBST.  
Detection: ECL Basic Kit (RM00020).  
Exposure time: 10s.