

[KO Validated] NLRX1 Rabbit pAb

Catalog No.: A18065 **KO Validated**

Basic Information

Observed MW

108kDa

Calculated MW

108kDa

Category

Primary antibody

Applications

ELISA, WB

Cross-Reactivity

Human, Mouse, Rat

Background

The protein encoded by this gene is a member of the NLR family and localizes to the outer mitochondrial membrane. The encoded protein is a regulator of mitochondrial antiviral responses. Three transcript variants encoding the same protein have been found for this gene.

Recommended Dilutions

WB 1:500 - 1:2000

Immunogen Information

Gene ID

79671

Swiss Prot

Q86UT6

Immunogen

Recombinant fusion protein containing a sequence corresponding to amino acids 87-360 of human NLRX1 (NP_001269073.1).

Synonyms

NOD5; NOD9; NOD26; DLNB26; CLR11.3; X1

Contact

 | 400-999-6126

 | cn.market@abclonal.com.cn

 | www.abclonal.com.cn

Product Information

Source

Rabbit

Isotype

IgG

Purification

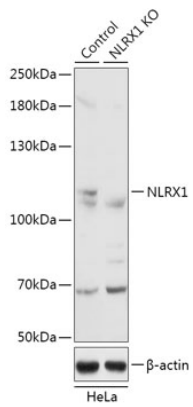
Affinity purification

Storage

Store at -20°C. Avoid freeze / thaw cycles.

Buffer: PBS with 0.01% thimerosal, 50% glycerol, pH7.3.

Validation Data



Western blot analysis of lysates from wild type (WT) and NLRX1 knockout (KO) HeLa cells, using [KO Validated] NLRX1 Rabbit pAb (A18065) at 1:3000 dilution.

Secondary antibody: HRP Goat Anti-Rabbit IgG (H+L) (AS014) at 1:10000 dilution.

Lysates/proteins: 25µg per lane.

Blocking buffer: 3% nonfat dry milk in TBST.

Detection: ECL Basic Kit (RM00020).

Exposure time: 10s.