

# [KO Validated] Annexin A6/Annexin VI Rabbit pAb

Catalog No.: A18069 **KO Validated**

## Basic Information

### Observed MW

76kDa

### Calculated MW

76kDa

### Category

Primary antibody

### Applications

ELISA, WB

### Cross-Reactivity

Human, Mouse

## Background

Annexin VI belongs to a family of calcium-dependent membrane and phospholipid binding proteins. Several members of the annexin family have been implicated in membrane-related events along exocytotic and endocytotic pathways. The annexin VI gene is approximately 60 kbp long and contains 26 exons. It encodes a protein of about 68 kDa that consists of eight 68-amino acid repeats separated by linking sequences of variable lengths. It is highly similar to human annexins I and II sequences, each of which contain four such repeats. Annexin VI has been implicated in mediating the endosome aggregation and vesicle fusion in secreting epithelia during exocytosis. Alternatively spliced transcript variants have been described.

## Recommended Dilutions

WB 1:500 - 1:2000

## Immunogen Information

### Gene ID

309

### Swiss Prot

P08133

### Immunogen

Recombinant fusion protein containing a sequence corresponding to amino acids 1-250 of human Annexin A6/Annexin VI (NP\_001146.2).

### Synonyms

p68; p70; ANX6; CBP68; CPB-II; VI

## Contact

 | 400-999-6126 | [cn.market@abclonal.com.cn](mailto:cn.market@abclonal.com.cn) | [www.abclonal.com.cn](http://www.abclonal.com.cn)

## Product Information

### Source

Rabbit

### Isotype

IgG

### Purification

Affinity purification

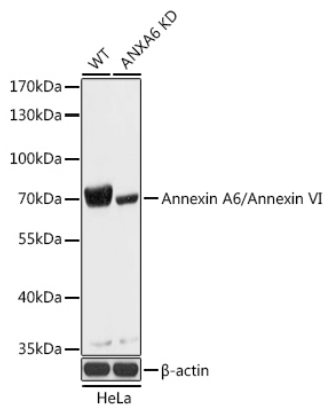
### Storage

Store at -20°C. Avoid freeze / thaw cycles.

Buffer: PBS with 0.01% thimerosal, 50% glycerol, pH7.3.

## Validation Data

---



Western blot analysis of lysates from wild type (WT) and Annexin A6/Annexin VI knockout (KO) HeLa cells, using [KO Validated] Annexin A6/Annexin VI Rabbit pAb (A18069) at 1:1000 dilution.  
Secondary antibody: HRP Goat Anti-Rabbit IgG (H+L) (AS014) at 1:10000 dilution.  
Lysates/proteins: 25µg per lane.  
Blocking buffer: 3% nonfat dry milk in TBST.  
Detection: ECL Basic Kit (RM00020).  
Exposure time: 1s.