

[KO Validated] MPG Rabbit pAb

Catalog No.: A18070 **KO Validated**

Basic Information

Observed MW

37kDa

Calculated MW

33kDa

Category

Primary antibody

Applications

WB, ELISA

Cross-Reactivity

Human, Mouse, Rat

Background

Predicted to enable alkylbase DNA N-glycosylase activity. Predicted to be involved in base-excision repair. Located in cytosol and nucleoplasm.

Recommended Dilutions

WB 1:500 - 1:2000

ELISA Recommended starting concentration is 1 µg/mL. Please optimize the concentration based on your specific assay requirements.

Immunogen Information

Gene ID

4350

Swiss Prot

P29372

Immunogen

Recombinant protein (or fragment). This information is considered to be commercially sensitive.

Synonyms

AAG; MDG; ADPG; APNG; Mid1; anpg; PIG11; PIG16; CRA36.1; PG

Contact

☎ | 400-999-6126

✉ | cn.market@abclonal.com.cn

🌐 | www.abclonal.com.cn

Product Information

Source

Rabbit

Isotype

IgG

Purification

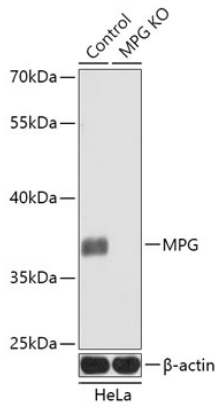
Affinity purification

Storage

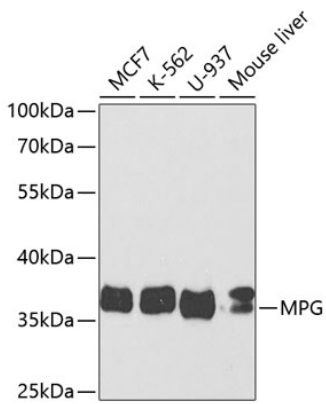
Store at -20°C. Avoid freeze / thaw cycles.

Buffer: PBS containing 50% glycerol, preserved with proclin300 or sodium azide (as specified on the Certificate of Analysis), pH 7.3.

Validation Data



Western blot analysis of lysates from wild type (WT) and MPG knockout (KO) HeLa cells, using [KO Validated] MPG Rabbit pAb (A18070) at 1:1000 dilution.
Secondary antibody: HRP-conjugated Goat anti-Rabbit IgG (H+L) (AS014) at 1:10000 dilution.
Lysates/proteins: 25µg per lane.
Blocking buffer: 3% nonfat dry milk in TBST.
Detection: ECL Basic Kit (RM00020).
Exposure time: 60s.



Western blot analysis of various lysates using MPG Rabbit pAb (A18070) at 1:1000 dilution.
Secondary antibody: HRP-conjugated Goat anti-Rabbit IgG (H+L) (AS014) at 1:10000 dilution.
Lysates/proteins: 25µg per lane.
Blocking buffer: 3% nonfat dry milk in TBST.
Detection: ECL Enhanced Kit (RM00021).
Exposure time: 40s.