

[KO Validated] PP2A-A β /PR65 β /PPP2R1B Rabbit pAb**Catalog No.: A18089** **KO** **Validated****Basic Information****Observed MW**

66kDa

Calculated MW

66kDa

Category

Primary antibody

Applications

ELISA, WB, IF/ICC

Cross-Reactivity

Human, Mouse, Rat

Background

This gene encodes a constant regulatory subunit of protein phosphatase 2. Protein phosphatase 2 is one of the four major Ser/Thr phosphatases, and it is implicated in the negative control of cell growth and division. It consists of a common heteromeric core enzyme, which is composed of a catalytic subunit and a constant regulatory subunit, that associates with a variety of regulatory subunits. The constant regulatory subunit A serves as a scaffolding molecule to coordinate the assembly of the catalytic subunit and a variable regulatory B subunit. This gene encodes a beta isoform of the constant regulatory subunit A. Mutations in this gene have been associated with some lung and colon cancers. Alternatively spliced transcript variants have been described.

Recommended Dilutions**WB** 1:500 - 1:2000**IF/ICC** 1:50 - 1:100**Immunogen Information****Gene ID**

5519

Swiss Prot

P30154

Immunogen

Recombinant fusion protein containing a sequence corresponding to amino acids 468-667 of human PP2A-A β /PR65 β /PP2A-A β /PR65 β /PPP2R1B (NP_859050.1).

SynonymsPR65B; PP2A-A β ; 1B**Contact** | 400-999-6126 | cn.market@abclonal.com.cn | www.abclonal.com.cn**Product Information****Source**

Rabbit

Isotype

IgG

Purification

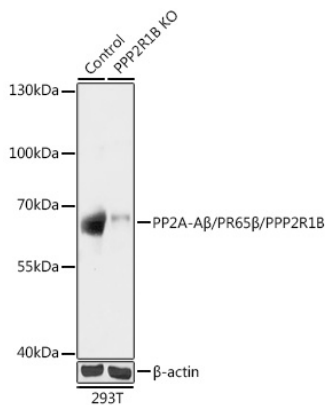
Affinity purification

Storage

Store at -20°C. Avoid freeze / thaw cycles.

Buffer: PBS with 0.01% thimerosal, 50% glycerol, pH7.3.

Validation Data



Western blot analysis of lysates from wild type (WT) and PP2A-Aβ/PR65β/PPP2R1B knockout (KO) 293T cells, using [KO Validated] PP2A-Aβ/PR65β/PPP2R1B Rabbit pAb (A18089) at 1:1000 dilution.
Secondary antibody: HRP Goat Anti-Rabbit IgG (H+L) (AS014) at 1:10000 dilution.
Lysates/proteins: 25µg per lane.
Blocking buffer: 3% nonfat dry milk in TBST.
Detection: ECL Basic Kit (RM00020).
Exposure time: 60s.