

[KO Validated] MYL6B Rabbit pAb

Catalog No.: A18102 **KO Validated**

Basic Information

Observed MW

25kDa

Calculated MW

23kDa

Category

Primary antibody

Applications

ELISA, WB

Cross-Reactivity

Human, Mouse, Rat

Background

Myosin is a hexameric ATPase cellular motor protein. It is composed of two heavy chains, two nonphosphorylatable alkali light chains, and two phosphorylatable regulatory light chains. This gene encodes a myosin alkali light chain expressed in both slow-twitch skeletal muscle and in nonmuscle tissue. Alternative splicing results in multiple transcript variants.

Recommended Dilutions

WB 1:200 - 1:500

Immunogen Information

Gene ID

140465

Swiss Prot

P14649

Immunogen

Recombinant fusion protein containing a sequence corresponding to amino acids 1-208 of human MYL6B (NP_002466.1).

Synonyms

MLC1SA; 6B

Contact

☎ | 400-999-6126

✉ | cn.market@abclonal.com.cn

🌐 | www.abclonal.com.cn

Product Information

Source

Rabbit

Isotype

IgG

Purification

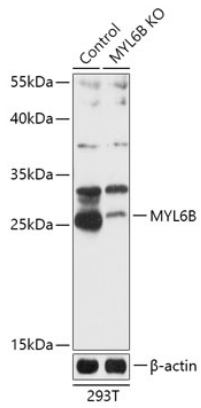
Affinity purification

Storage

Store at -20°C. Avoid freeze / thaw cycles.

Buffer: PBS with 0.01% thimerosal, 50% glycerol, pH7.3.

Validation Data



Western blot analysis of lysates from wild type (WT) and MYL6B knockout (KO) 293T cells, using [KO Validated] MYL6B Rabbit pAb (A18102) at 1:1000 dilution.

Secondary antibody: HRP Goat Anti-Rabbit IgG (H+L) (AS014) at 1:10000 dilution.

Lysates/proteins: 25 μ g per lane.

Blocking buffer: 3% nonfat dry milk in TBST.

Detection: ECL Basic Kit (RM00020).

Exposure time: 10s.