

# ZDHHHC6 Rabbit pAb

Catalog No.: A18113

## Basic Information

### Observed MW

56kDa

### Calculated MW

48kDa

### Category

Primary antibody

### Applications

ELISA, WB

### Cross-Reactivity

Human, Mouse, Rat

## Background

Enables palmitoyltransferase activity. Involved in positive regulation of mitochondrial fusion and protein palmitoylation. Located in endoplasmic reticulum.

## Recommended Dilutions

WB 1:500 - 1:2000

## Immunogen Information

### Gene ID

64429

### Swiss Prot

Q9H6R6

### Immunogen

Recombinant fusion protein containing a sequence corresponding to amino acids 279-413 of human ZDHHHC6 (NP\_071939.1).

### Synonyms

DHHC6; DHHC-6; ZNF376; ZDHHHC6

## Contact

☎ | 400-999-6126

✉ | [cn.market@abclonal.com.cn](mailto:cn.market@abclonal.com.cn)

🌐 | [www.abclonal.com.cn](http://www.abclonal.com.cn)

## Product Information

### Source

Rabbit

### Isotype

IgG

### Purification

Affinity purification

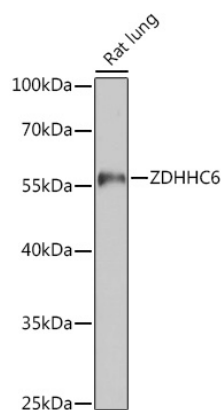
### Storage

Store at -20°C. Avoid freeze / thaw cycles.

Buffer: PBS with 0.01% thimerosal, 50% glycerol, pH7.3.

## Validation Data

---



Western blot analysis of lysates from Rat lung, using ZDHHC6 Rabbit pAb (A18113) at 1:1000 dilution.  
Secondary antibody: HRP Goat Anti-Rabbit IgG (H+L) (AS014) at 1:10000 dilution.  
Lysates/proteins: 25µg per lane.  
Blocking buffer: 3% nonfat dry milk in TBST.  
Detection: ECL Basic Kit (RM00020).  
Exposure time: 90s.