

[KD Validated] β III-Tubulin Mouse mAb

Catalog No.: A18132 **4 Publications**

Basic Information

Observed MW

Calculated MW

50kDa

Category

Primary antibody

Applications

WB,IHC-P,IF/ICC,ELISA

Cross-Reactivity

Human, Mouse, Rat

CloneNo number

AMC0115

Background

This gene encodes a class III member of the beta tubulin protein family. Beta tubulins are one of two core protein families (alpha and beta tubulins) that heterodimerize and assemble to form microtubules. This protein is primarily expressed in neurons and may be involved in neurogenesis and axon guidance and maintenance. Mutations in this gene are the cause of congenital fibrosis of the extraocular muscles type 3. Alternate splicing results in multiple transcript variants. A pseudogene of this gene is found on chromosome 6.

Recommended Dilutions

WB 1:1000 - 1:6000

IHC-P 1:1000 - 1:10000

IF/ICC 1:50 - 1:200

ELISA Recommended starting concentration is 1 μ g/mL. Please optimize the concentration based on your specific assay requirements.

Contact

 | 400-999-6126

 | cn.market@abclonal.com.cn

 | www.abclonal.com.cn

Immunogen Information

Gene ID

10381

Swiss Prot

Q13509

Immunogen

Recombinant fusion protein containing a sequence corresponding to amino acids 40-260 of human TUBB3 (Q13509).

Synonyms

CDCBM; FEOM3; TUBB4; CDCBM1; CFEOM3; beta-4; CFEOM3A; [KD Validated] β III-Tubulin

Product Information

Source

Mouse

Isotype

IgG2b,kappa

Purification

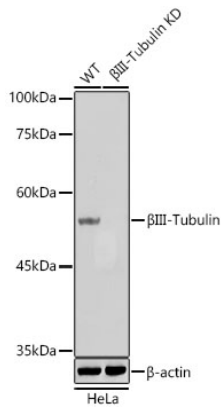
Affinity purification

Storage

Store at -20°C. Avoid freeze / thaw cycles.

Buffer: PBS with 0.05% proclin300,50% glycerol,pH7.3.

Validation Data



Western blot analysis of lysates from wild type (WT) and β III-Tubulin knockdown (KD) HeLa cells, using [KD Validated] β III-Tubulin Mouse mAb (A18132) at 1:1000 dilution.

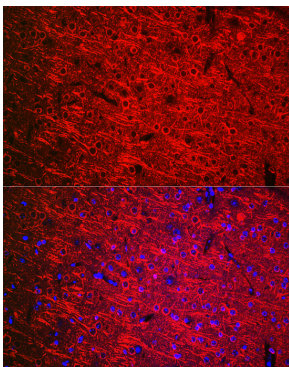
Secondary antibody: HRP-conjugated Goat anti-Mouse IgG (H+L) (AS003) at 1:10000 dilution.

Lysates/proteins: 25 μ g per lane.

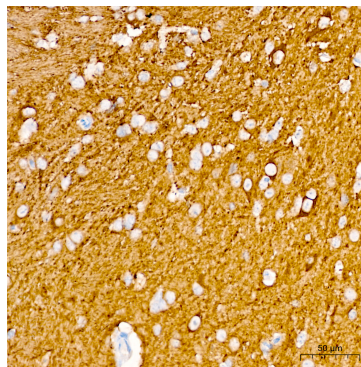
Blocking buffer: 3% nonfat dry milk in TBST.

Detection: ECL Basic Kit (RM00020).

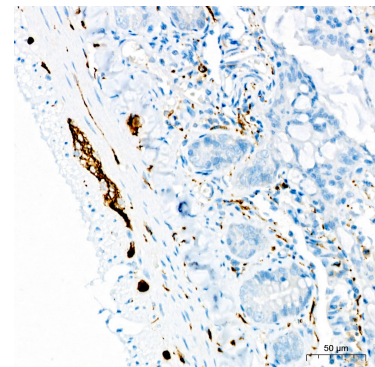
Exposure time: 1s.



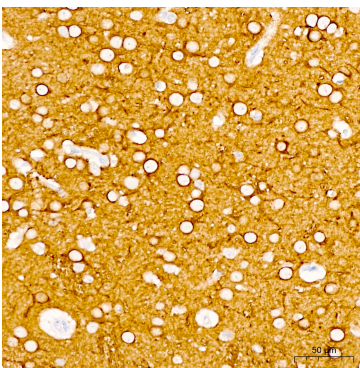
Immunofluorescence analysis of paraffin-embedded mouse brain using [KO Validated] β III-Tubulin Mouse mAb (A18132) at dilution of 1:200 (40x lens). Blue: DAPI for nuclear staining.



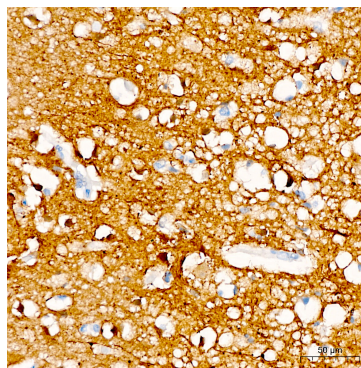
Immunohistochemistry analysis of paraffin-embedded Mouse brain tissue using [KD Validated] β III-Tubulin Mouse mAb (A18132) at a dilution of 1:4500 (40x lens). High pressure antigen retrieval performed with 0.01M Citrate Buffer (pH 6.0) prior to IHC staining.



Immunohistochemistry analysis of paraffin-embedded Rat colon tissue using [KD Validated] β III-Tubulin Mouse mAb (A18132) at a dilution of 1:4500 (40x lens). High pressure antigen retrieval performed with 0.01M Citrate Buffer (pH 6.0) prior to IHC staining.



Immunohistochemistry analysis of paraffin-embedded Rat brain tissue using [KD Validated] β III-Tubulin Mouse mAb (A18132) at a dilution of 1:4500 (40x lens). High pressure antigen retrieval performed with 0.01M Citrate Buffer (pH 6.0) prior to IHC staining.



Immunohistochemistry analysis of paraffin-embedded Human brain tissue using [KD Validated] β III-Tubulin Mouse mAb (A18132) at a dilution of 1:4500 (40x lens). High pressure antigen retrieval performed with 0.01M Citrate Buffer (pH 6.0) prior to IHC staining.