

# E-Cadherin Mouse mAb

Catalog No.: A18135 **3 Publications**

## Basic Information

### Observed MW

135kDa

### Calculated MW

97kDa

### Category

Primary antibody

### Applications

WB,IF/ICC,ELISA

### Cross-Reactivity

Human, Mouse

### CloneNo number

AMC0113

## Background

This gene encodes a classical cadherin of the cadherin superfamily. Alternative splicing results in multiple transcript variants, at least one of which encodes a preproprotein that is proteolytically processed to generate the mature glycoprotein. This calcium-dependent cell-cell adhesion protein is comprised of five extracellular cadherin repeats, a transmembrane region and a highly conserved cytoplasmic tail. Mutations in this gene are correlated with gastric, breast, colorectal, thyroid and ovarian cancer. Loss of function of this gene is thought to contribute to cancer progression by increasing proliferation, invasion, and/or metastasis. The ectodomain of this protein mediates bacterial adhesion to mammalian cells and the cytoplasmic domain is required for internalization. This gene is present in a gene cluster with other members of the cadherin family on chromosome 16.

## Recommended Dilutions

**WB** 1:700 - 1:4200

**IF/ICC** 1:100 - 1:2000

**ELISA** Recommended starting concentration is 1 µg/mL. Please optimize the concentration based on your specific assay requirements.

## Immunogen Information

### Gene ID

999

### Swiss Prot

P12830

### Immunogen

Recombinant fusion protein containing a sequence corresponding to amino acids 373-622 of human E-Cadherin (P12830).

### Synonyms

UVO; CDHE; ECAD; LCAM; Arc-1; BCDS1; CD324; E-Cadherin

## Contact

☎ | 400-999-6126

✉ | [cn.market@abclonal.com.cn](mailto:cn.market@abclonal.com.cn)

🌐 | [www.abclonal.com.cn](http://www.abclonal.com.cn)

## Product Information

### Source

Mouse

### Isotype

IgG2b,kappa

### Purification

Affinity purification

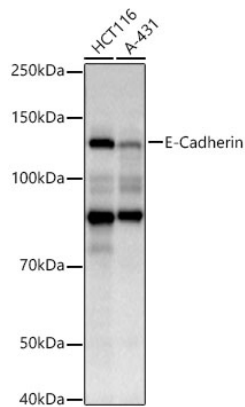
### Storage

Store at -20°C. Avoid freeze / thaw cycles.

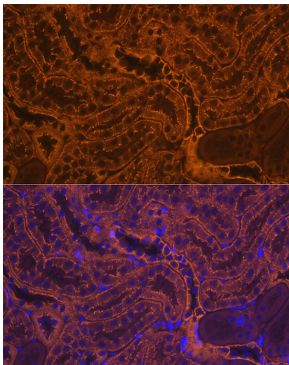
Buffer: PBS with 0.05% proclin300,50% glycerol,pH7.3.

## Validation Data

---



Western blot analysis of various lysates using E-Cadherin Mouse mAb (A18135) at 1:700 dilution.  
Secondary antibody: HRP-conjugated Goat anti-Mouse IgG (H+L) (AS003) at 1:10000 dilution.  
Lysates/proteins: 25µg per lane.  
Blocking buffer: 3% nonfat dry milk in TBST.  
Detection: ECL Basic Kit (RM00020).  
Exposure time: 10s.



Immunofluorescence analysis of paraffin-embedded mouse kidney using E-Cadherin Mouse mAb (A18135) at dilution of 1:100 (40x lens). Blue: DAPI for nuclear staining. Perform high pressure antigen retrieval with 0.01 M citrate buffer (pH 6.0) prior to IF staining.