

RAB11FIP5 Rabbit pAb

Catalog No.: A18142 **2 Publications**

Basic Information

Observed MW

70-90kDa

Calculated MW

70kDa

Category

Primary antibody

Applications

WB,IF/ICC,ELISA

Cross-Reactivity

Human, Mouse, Rat

Background

Enables gamma-tubulin binding activity. Involved in cellular response to acidic pH; negative regulation of adiponectin secretion; and regulation of protein localization to cell surface. Located in centriolar satellite and mitochondrial outer membrane.

Recommended Dilutions

WB 1:500 - 1:1000

IF/ICC 1:50 - 1:200

ELISA Recommended starting concentration is 1 µg/mL. Please optimize the concentration based on your specific assay requirements.

Immunogen Information

Gene ID

26056

Swiss Prot

Q9BXF6

Immunogen

Recombinant fusion protein containing a sequence corresponding to amino acids 354-653 of human RAB11FIP5 (NP_056285.1).

Synonyms

GAF1; pp75; RIP11; gaf-1; rab11-FIP5; RAB11FIP5

Contact

 | 400-999-6126

 | cn.market@abclonal.com.cn

 | www.abclonal.com.cn

Product Information

Source

Rabbit

Isotype

IgG

Purification

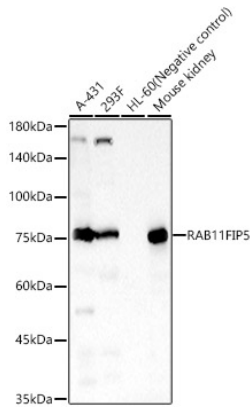
Affinity purification

Storage

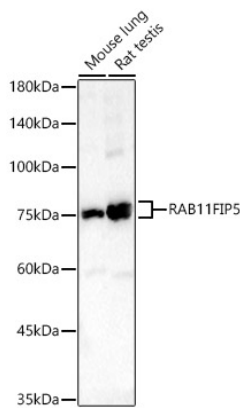
Store at -20°C. Avoid freeze / thaw cycles.

Buffer: PBS with 0.05% proclin300,50% glycerol,pH7.3.

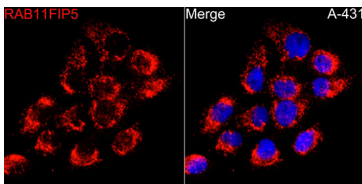
Validation Data



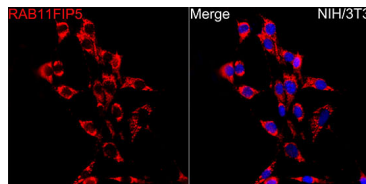
Western blot analysis of various lysates, using RAB11FIP5 Rabbit pAb (A18142) at 1:800 dilution. Secondary antibody: HRP-conjugated Goat anti-Rabbit IgG (H+L) (AS014) at 1:10000 dilution. Lysates/proteins: 25µg per lane. Blocking buffer: 3% nonfat dry milk in TBST. Detection: ECL Basic Kit (RM00020). Exposure time: 60s.



Western blot analysis of various lysates, using RAB11FIP5 Rabbit pAb (A18142) at 1:800 dilution. Secondary antibody: HRP-conjugated Goat anti-Rabbit IgG (H+L) (AS014) at 1:10000 dilution. Lysates/proteins: 25µg per lane. Blocking buffer: 3% nonfat dry milk in TBST. Detection: ECL Basic Kit (RM00020). Exposure time: 180s.



Immunofluorescence analysis of A-431 cells using RAB11FIP5 Rabbit pAb (A18142) at dilution of 1:50 (40x lens). Secondary antibody: Cy3-conjugated Goat anti-Rabbit IgG (H+L) (AS007) at 1:500 dilution. Blue: DAPI for nuclear staining.



Immunofluorescence analysis of NIH/3T3 cells using RAB11FIP5 Rabbit pAb (A18142) at dilution of 1:50 (40x lens). Secondary antibody: Cy3-conjugated Goat anti-Rabbit IgG (H+L) (AS007) at 1:500 dilution. Blue: DAPI for nuclear staining.