

# K63-linkage Specific Polyubiquitin Rabbit pAb

Catalog No.: A18164 **5 Publications**

## Basic Information

### Observed MW

15-200kDa

### Calculated MW

### Category

Primary antibody

### Applications

DB, ELISA

### Cross-Reactivity

Human, Mouse, Rat, Other (Wide Range Predicted)

## Background

Ubiquitination, one type of the most common post-translational modification, mediates the regulation of protein homeostasis in vivo. Since ubiquitin itself contains multiple lysine residues and one N-terminal free amino group, eight types of ubiquitin chains can be formed. K63-linked polyubiquitin chains exert nonproteolytic functions in vivo, such as protein trafficking, kinase/phosphatase activation, and DNA damage control, all of which might be important in regulation of cancer survival and development [PMID: 19217402][PMCID: PMC3008764].

## Recommended Dilutions

**DB** 1:500 - 1:1000

**ELISA** Recommended starting concentration is 1 µg/mL. Please optimize the concentration based on your specific assay requirements.

## Immunogen Information

### Gene ID

### Swiss Prot

### Immunogen

A synthetic peptide corresponding to a sequence containing polyubiquitinated protein (K63 linkage).

### Synonyms

## Contact

☎ | 400-999-6126

✉ | [cn.market@abclonal.com.cn](mailto:cn.market@abclonal.com.cn)

🌐 | [www.abclonal.com.cn](http://www.abclonal.com.cn)

## Product Information

### Source

Rabbit

### Isotype

IgG

### Purification

Affinity purification

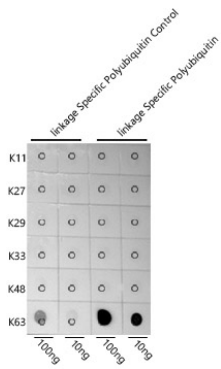
### Storage

Store at -20°C. Avoid freeze / thaw cycles.

Buffer: PBS with 0.05% proclin300, 50% glycerol, pH7.3.

## Validation Data

---



Dot-blot analysis of all sorts of peptides using K63-linkage Specific Polyubiquitin antibody (A18164) at 1:1000 dilution.