

EIF6 Rabbit pAb

Catalog No.: A1818

Basic Information

Observed MW

27kDa

Calculated MW

27kDa

Category

Primary antibody

Applications

ELISA,WB,IF/ICC

Cross-Reactivity

Human, Mouse, Rat

Background

Hemidesmosomes are structures which link the basal lamina to the intermediate filament cytoskeleton. An important functional component of hemidesmosomes is the integrin beta-4 subunit (ITGB4), a protein containing two fibronectin type III domains. The protein encoded by this gene binds to the fibronectin type III domains of ITGB4 and may help link ITGB4 to the intermediate filament cytoskeleton. The encoded protein, which is insoluble and found both in the nucleus and in the cytoplasm, can function as a translation initiation factor and prevent the association of the 40S and 60S ribosomal subunits. Multiple non-protein coding transcript variants and variants encoding two different isoforms have been found for this gene.

Recommended Dilutions

WB	1:500 - 1:2000
IF/ICC	1:50 - 1:200

Immunogen Information

Gene ID

3692

Swiss Prot

P56537

Immunogen

Recombinant fusion protein containing a sequence corresponding to amino acids 1-245 of human EIF6 (NP_852133.1).

Synonyms

CAB; EIF3A; eIF-6; p27BBP; ITGB4BP; b(2)gcn; p27(BBP); EIF6

Contact

☎ | 400-999-6126

✉ | cn.market@abclonal.com.cn

🌐 | www.abclonal.com.cn

Product Information

Source

Rabbit

Isotype

IgG

Purification

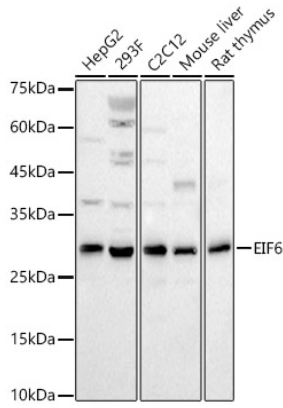
Affinity purification

Storage

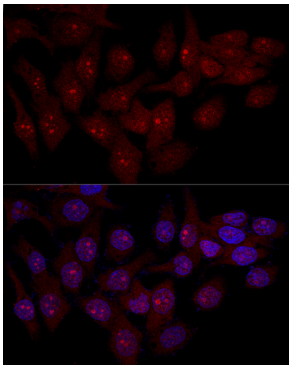
Store at -20°C. Avoid freeze / thaw cycles.

Buffer: PBS with 0.02% sodium azide,50% glycerol,pH7.3.

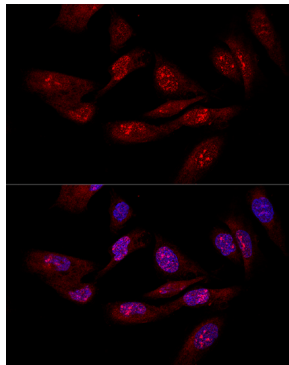
Validation Data



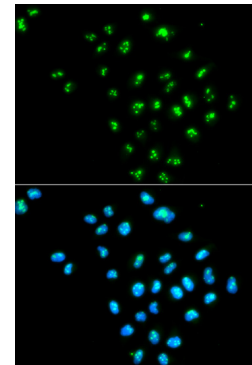
Western blot analysis of various lysates, using EIF6 Rabbit pAb (A1818) at 1:2000 dilution. Secondary antibody: HRP Goat Anti-Rabbit IgG (H+L) (AS014) at 1:10000 dilution. Lysates/proteins: 25µg per lane. Blocking buffer: 3% nonfat dry milk in TBST. Detection: ECL Basic Kit (RM00020). Exposure time: 30s.



Confocal immunofluorescence analysis of HeLa cells using EIF6 antibody (A1818) at dilution of 1:50. Blue: DAPI for nuclear staining.



Confocal immunofluorescence analysis of U-2OS cells using EIF6 antibody (A1818) at dilution of 1:50. Blue: DAPI for nuclear staining.



Immunofluorescence analysis of MCF-7 cells using EIF6 antibody (A1818). Blue: DAPI for nuclear staining.