

Mrpl46 Rabbit pAb

Catalog No.: A18187

Basic Information

Observed MW

32kDa

Calculated MW

32kDa

Category

Primary antibody

Applications

WB,IHC-P,ELISA

Cross-Reactivity

Human, Mouse, Rat

Background

Predicted to be a structural constituent of ribosome. Located in mitochondrion. Is expressed in several structures, including early conceptus; gonad; heart; liver; and metanephros. Orthologous to human MRPL46 (mitochondrial ribosomal protein L46).

Recommended Dilutions

WB 1:500 - 1:2000

IHC-P 1:50 - 1:200

ELISA Recommended starting concentration is 1 µg/mL. Please optimize the concentration based on your specific assay requirements.

Immunogen Information

Gene ID

67308

Swiss Prot

Q9EQI8

Immunogen

Recombinant protein (or fragment). This information is considered to be commercially sensitive.

Synonyms

LIECG2; P2ECSL; C15orf4; 3110052F15Rik; Mrpl46

Contact

 | 400-999-6126

 | cn.market@abclonal.com.cn

 | www.abclonal.com.cn

Product Information

Source

Rabbit

Isotype

IgG

Purification

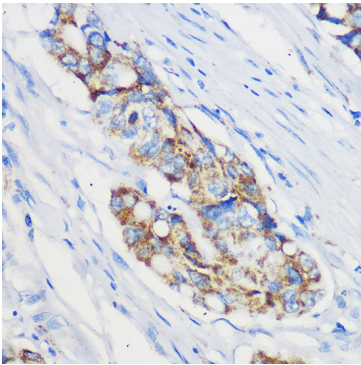
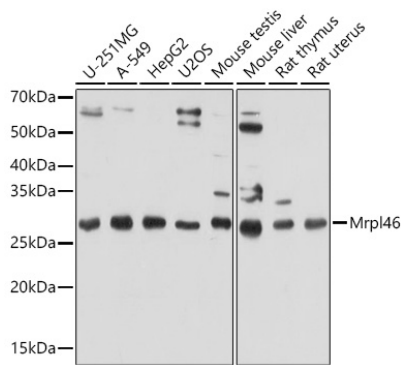
Affinity purification

Storage

Store at -20°C. Avoid freeze / thaw cycles.

Buffer: PBS with 0.01% thimerosal, 50% glycerol, pH7.3.

Validation Data



Immunohistochemistry analysis of paraffin-embedded Human colon carcinoma using Mrpl46 Rabbit pAb (A18187) at dilution of 1:100 (40x lens). Microwave antigen retrieval performed with 0.01M PBS Buffer (pH 7.2) prior to IHC staining.