

# Mrpl48 Rabbit pAb

Catalog No.: A18188

## Basic Information

### Observed MW

19kDa

### Calculated MW

24kDa

### Category

Primary antibody

### Applications

ELISA, WB

### Cross-Reactivity

Human, Mouse, Rat

## Background

Located in mitochondrion. Is expressed in several structures, including early conceptus; gonad; heart; liver; and metanephros. Orthologous to human MRPL48 (mitochondrial ribosomal protein L48).

## Recommended Dilutions

WB 1:500 - 1:2000

## Immunogen Information

### Gene ID

52443

### Swiss Prot

Q8JZS9

### Immunogen

Recombinant fusion protein containing a sequence corresponding to amino acids 28-211 of mouse Mrpl48 (NP\_942128.2).

### Synonyms

L48mt; CGI-118; MRP-L48; D4ErtD786e; 1810030E20Rik; 2610028L11Rik; Mrpl48

## Contact

☎ | 400-999-6126

✉ | [cn.market@abclonal.com.cn](mailto:cn.market@abclonal.com.cn)

🌐 | [www.abclonal.com.cn](http://www.abclonal.com.cn)

## Product Information

### Source

Rabbit

### Isotype

IgG

### Purification

Affinity purification

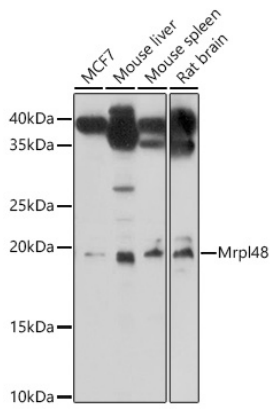
### Storage

Store at -20°C. Avoid freeze / thaw cycles.

Buffer: PBS with 0.01% thimerosal, 50% glycerol, pH7.3.

## Validation Data

---



Western blot analysis of various lysates using Mrpl48 Rabbit pAb (A18188) at 1:1000 dilution.  
Secondary antibody: HRP Goat Anti-Rabbit IgG (H+L) (AS014) at 1:10000 dilution.  
Lysates/proteins: 25µg per lane.  
Blocking buffer: 3% nonfat dry milk in TBST.  
Detection: ECL Basic Kit (RM00020).  
Exposure time: 180s.