

CFAP61 Rabbit pAb

Catalog No.: A18194 **1 Publications**

Basic Information

Observed MW

141kDa

Calculated MW

141kDa

Category

Primary antibody

Applications

ELISA, WB, IHC-P, IF/ICC

Cross-Reactivity

Human, Mouse

Background

Predicted to be involved in cilium movement and cilium organization. Predicted to be located in axoneme and motile cilium. Predicted to colocalize with radial spoke stalk.

Recommended Dilutions

WB	1:500 - 1:2000
IHC-P	1:50 - 1:200
IF/ICC	1:50 - 1:200

Immunogen Information

Gene ID

26074

Swiss Prot

Q8NHU2

Immunogen

A synthetic peptide corresponding to a sequence within amino acids 1-100 of human CFAP61 (NP_056400.3).

Synonyms

CaM-IP3; C20orf26; dj1002M8.3; dj1178H5.4; CFAP61

Contact

 | 400-999-6126

 | cn.market@abclonal.com.cn

 | www.abclonal.com.cn

Product Information

Source

Rabbit

Isotype

IgG

Purification

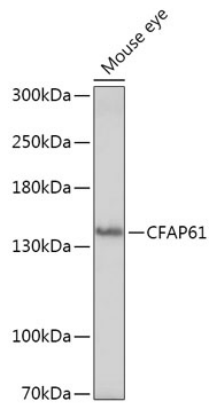
Affinity purification

Storage

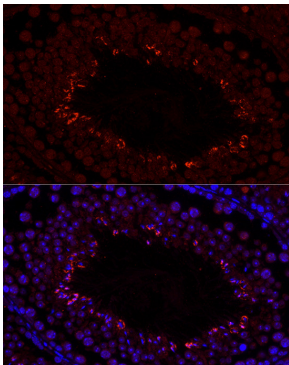
Store at -20°C. Avoid freeze / thaw cycles.

Buffer: PBS with 0.01% thimerosal, 50% glycerol, pH7.3.

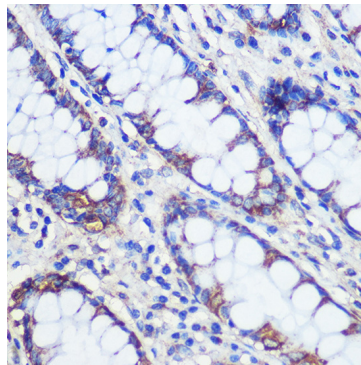
Validation Data



Western blot analysis of lysates from Mouse eye, using CFAP61 Rabbit pAb (A18194) at 1:1000 dilution.
Secondary antibody: HRP Goat Anti-Rabbit IgG (H+L) (AS014) at 1:10000 dilution.
Lysates/proteins: 25µg per lane.
Blocking buffer: 3% nonfat dry milk in TBST.
Detection: ECL Basic Kit (RM00020).
Exposure time: 3min.



Immunofluorescence analysis of paraffin-embedded mouse testis using CFAP61 Rabbit pAb (A18194) at dilution of 1:100 (40x lens).
Secondary antibody: Cy3 Goat Anti-Rabbit IgG (H+L) (AS007) at 1:500 dilution. Blue: DAPI for nuclear staining.



Immunohistochemistry analysis of paraffin-embedded Human colon using CFAP61 Rabbit pAb (A18194) at dilution of 1:100 (40x lens). Perform microwave antigen retrieval with 10 mM PBS buffer pH 7.2 before commencing with IHC staining protocol.