

K11-linkage Specific Polyubiquitin Rabbit pAb

Catalog No.: A18197 **1 Publications**

Basic Information

Observed MW

Calculated MW

Category

Primary antibody

Applications

ELISA,DB,WB

Cross-Reactivity

Human, Mouse, Rat, Other (Wide Range Predicted)

Background

Polyubiquitination is a posttranslational modification where ubiquitin chains containing isopeptide bonds linking one of seven ubiquitin lysines with the C terminus of an adjoining ubiquitin are covalently attached to proteins. A crystal structure of K11-linked diubiquitin demonstrates a distinct conformation from K48- or K63-linked diubiquitin. It is important that K11-linked ubiquitin chains as critical regulators of mitotic protein degradation.

Recommended Dilutions

DB 1:500 - 1:1000

WB 1:500 - 1:2000

Immunogen Information

Gene ID

Swiss Prot

Immunogen

A synthetic peptide corresponding to a sequence containing polyubiquitinated protein (K11 linkage).

Synonyms

Contact

☎ | 400-999-6126

✉ | cn.market@abclonal.com.cn

🌐 | www.abclonal.com.cn

Product Information

Source

Rabbit

Isotype

IgG

Purification

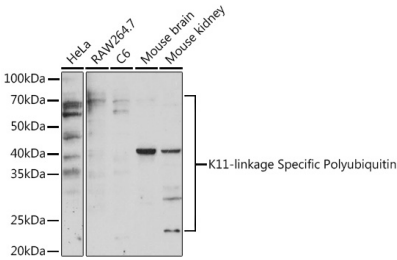
Affinity purification

Storage

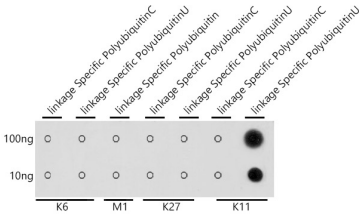
Store at -20°C. Avoid freeze / thaw cycles.

Buffer: PBS with 0.01% thimerosal, 50% glycerol, pH7.3.

Validation Data



Western blot analysis of various lysates using K11-linkage Specific Polyubiquitin Rabbit pAb (A18197) at 1:500 dilution.
Secondary antibody: HRP Goat Anti-Rabbit IgG (H+L) (AS014) at 1:10000 dilution.
Lysates/proteins: 25µg per lane.
Blocking buffer: 3% nonfat dry milk in TBST.
Detection: ECL Enhanced Kit (RM00021).
Exposure time: 90s.



Dot-blot analysis of all sorts of peptides using K11-linkage Specific Polyubiquitin antibody (A18197) at 1:1000 dilution.