

# K29-linkage Specific Polyubiquitin Rabbit pAb

Catalog No.: A18198

## Basic Information

### Observed MW

### Calculated MW

### Category

Primary antibody

### Applications

WB,DB,ELISA

### Cross-Reactivity

Human, Mouse, Rat, Other (Wide Range Predicted)

## Background

Polyubiquitin chains regulate diverse cellular processes through the ability of ubiquitin to form chains of eight different linkage types. When attached to a target protein, have different functions depending on the Lys residue of the ubiquitin that is linked. K29-linked ubiquitination is involved in different kinds of cellular proteotoxic stress response as well as cell cycle regulation. In particular, K29-linked ubiquitination is enriched in the midbody and downregulation of the K29-linked ubiquitination signal arrests cells in G1/S phase.

## Recommended Dilutions

**WB** 1:500 - 1:2000

**DB** 1:500 - 1:1000

**ELISA** Recommended starting concentration is 1 µg/mL. Please optimize the concentration based on your specific assay requirements.

## Immunogen Information

### Gene ID

### Swiss Prot

### Immunogen

A synthetic peptide corresponding to a sequence containing polyubiquitinated protein (K29 linkage).

### Synonyms

## Contact

☎ | 400-999-6126

✉ | [cn.market@abclonal.com.cn](mailto:cn.market@abclonal.com.cn)

🌐 | [www.abclonal.com.cn](http://www.abclonal.com.cn)

## Product Information

### Source

Rabbit

### Isotype

IgG

### Purification

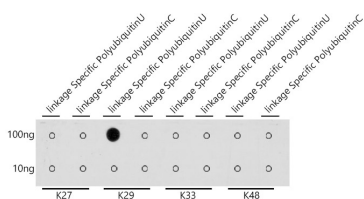
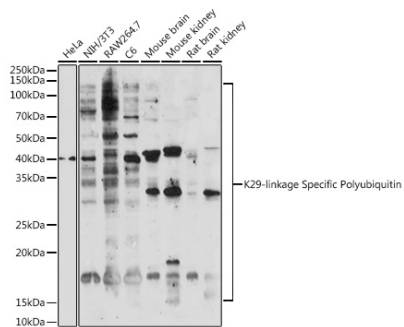
Affinity purification

### Storage

Store at -20°C. Avoid freeze / thaw cycles.

Buffer: PBS with 0.01% thimerosal, 50% glycerol, pH7.3.

## Validation Data



Dot-blot analysis of all sorts of peptides using K29-linkage Specific Polyubiquitin antibody (A18198) at 1:1000 dilution.