

# BTBD7 Rabbit pAb

Catalog No.: A18206

## Basic Information

### Observed MW

126kDa

### Calculated MW

126kDa

### Category

Primary antibody

### Applications

ELISA, WB

### Cross-Reactivity

Human, Mouse, Rat

## Background

Predicted to be involved in regulation of branching involved in salivary gland morphogenesis.  
Predicted to be located in nucleus.

## Recommended Dilutions

WB 1:500 - 1:2000

## Immunogen Information

### Gene ID

55727

### Swiss Prot

Q9P203

### Immunogen

Recombinant fusion protein containing a sequence corresponding to amino acids 5-75 of human BTBD7 (NP\_060637.1).

### Synonyms

FUP1; BTBD7

## Contact

☎ | 400-999-6126

✉ | [cn.market@abclonal.com.cn](mailto:cn.market@abclonal.com.cn)

🌐 | [www.abclonal.com.cn](http://www.abclonal.com.cn)

## Product Information

### Source

Rabbit

### Isotype

IgG

### Purification

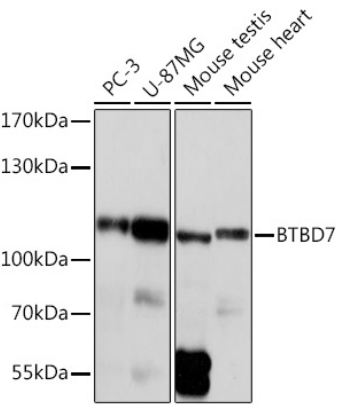
Affinity purification

### Storage

Store at -20°C. Avoid freeze / thaw cycles.

Buffer: PBS with 0.01% thimerosal, 50% glycerol, pH 7.3.

Validation Data



Western blot analysis of various lysates using BTBD7 Rabbit pAb (A18206) at 1:1000 dilution.  
Secondary antibody: HRP Goat Anti-Rabbit IgG (H+L) (AS014) at 1:10000 dilution.  
Lysates/proteins: 25µg per lane.  
Blocking buffer: 3% nonfat dry milk in TBST.  
Detection: ECL Basic Kit (RM00020).  
Exposure time: 10s.