

# PHLPP2 Rabbit pAb

Catalog No.: A18218 **2 Publications**

## Basic Information

### Observed MW

140kDa

### Calculated MW

147kDa

### Category

Primary antibody

### Applications

ELISA, WB, IF/ICC

### Cross-Reactivity

Human, Mouse, Rat

## Background

Predicted to enable protein serine/threonine phosphatase activity. Predicted to be involved in signal transduction. Located in several cellular components, including intercellular bridge; mitotic spindle; and nucleoplasm.

## Recommended Dilutions

**WB** 1:500 - 1:2000

**IF/ICC** 1:50 - 1:200

## Immunogen Information

### Gene ID

23035

### Swiss Prot

Q6ZVD8

### Immunogen

A synthetic peptide corresponding to a sequence within amino acids 1250-1323 of human PHLPP2 (NP\_055835.2).

### Synonyms

PPM3B; PHLPPL; PHLPP2

## Contact

☎ | 400-999-6126

✉ | [cn.market@abclonal.com.cn](mailto:cn.market@abclonal.com.cn)

🌐 | [www.abclonal.com.cn](http://www.abclonal.com.cn)

## Product Information

### Source

Rabbit

### Isotype

IgG

### Purification

Affinity purification

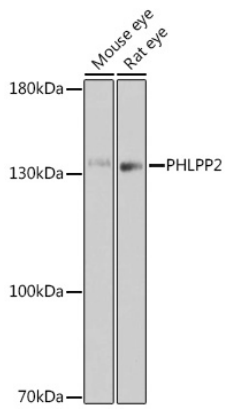
### Storage

Store at -20°C. Avoid freeze / thaw cycles.

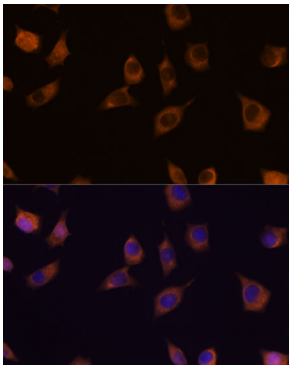
Buffer: PBS with 0.01% thimerosal, 50% glycerol, pH7.3.

## Validation Data

---



Western blot analysis of various lysates using PHLPP2 Rabbit pAb (A18218) at 1:1000 dilution.  
Secondary antibody: HRP Goat Anti-Rabbit IgG (H+L) (AS014) at 1:10000 dilution.  
Lysates/proteins: 25 $\mu$ g per lane.  
Blocking buffer: 3% nonfat dry milk in TBST.  
Detection: ECL Basic Kit (RM00020).  
Exposure time: 180s.



Immunofluorescence analysis of L929 cells using PHLPP2 Rabbit pAb (A18218) at dilution of 1:100. Secondary antibody: Cy3 Goat Anti-Rabbit IgG (H+L) (AS007) at 1:500 dilution. Blue: DAPI for nuclear staining.