

HSPB11 Rabbit pAb

Catalog No.: A18224

Basic Information

Observed MW

16kDa

Calculated MW

16kDa

Category

Primary antibody

Applications

ELISA, WB, IHC-P, IF/ICC

Cross-Reactivity

Human, Mouse, Rat

Background

Predicted to enable metal ion binding activity. Predicted to be involved in kidney development and spermatogenesis. Predicted to act upstream of or within animal organ development; left/right axis specification; and skeletal system development. Predicted to be located in ciliary tip. Predicted to be part of intraciliary transport particle B. Predicted to be active in centrosome and cilium.

Recommended Dilutions

WB	1:500 - 1:2000
IHC-P	1:50 - 1:200
IF/ICC	1:50 - 1:200

Immunogen Information

Gene ID

51668

Swiss Prot

Q9Y547

Immunogen

Recombinant fusion protein containing a sequence corresponding to amino acids 1-144 of human HSPB11 (NP_057210.2).

Synonyms

PP25; FAP232; HSPB11; C1orf41; CFAP232; HSPCO34

Contact

☎ | 400-999-6126

✉ | cn.market@abclonal.com.cn

🌐 | www.abclonal.com.cn

Product Information

Source

Rabbit

Isotype

IgG

Purification

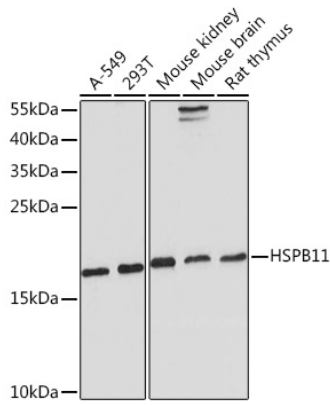
Affinity purification

Storage

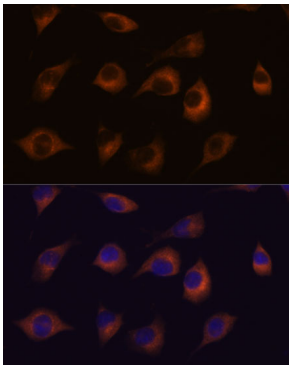
Store at -20°C. Avoid freeze / thaw cycles.

Buffer: PBS with 0.01% thimerosal, 50% glycerol, pH7.3.

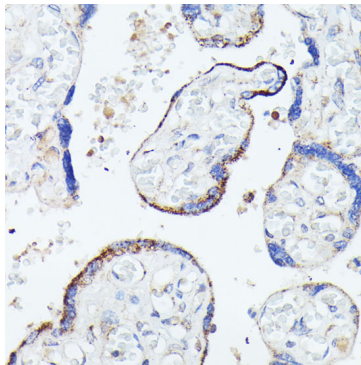
Validation Data



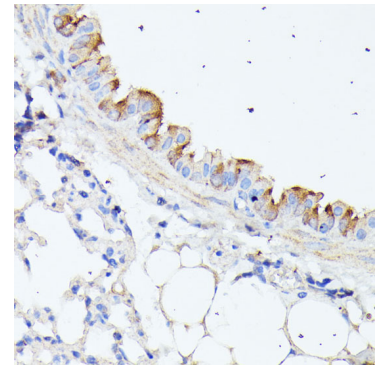
Western blot analysis of various lysates using HSPB11 Rabbit pAb (A18224) at 1:1000 dilution. Secondary antibody: HRP Goat Anti-Rabbit IgG (H+L) (AS014) at 1:10000 dilution. Lysates/proteins: 25µg per lane. Blocking buffer: 3% nonfat dry milk in TBST. Detection: ECL Basic Kit (RM00020). Exposure time: 180s.



Immunofluorescence analysis of L929 cells using HSPB11 Rabbit pAb (A18224) at dilution of 1:100. Secondary antibody: Cy3 Goat Anti-Rabbit IgG (H+L) (AS007) at 1:500 dilution. Blue: DAPI for nuclear staining.



Immunohistochemistry analysis of paraffin-embedded human placenta using HSPB11 Rabbit pAb (A18224) at dilution of 1:100 (40x lens). Perform microwave antigen retrieval with 10 mM PBS buffer pH 7.2 before commencing with IHC staining protocol.



Immunohistochemistry analysis of paraffin-embedded mouse lung using HSPB11 Rabbit pAb (A18224) at dilution of 1:100 (40x lens). Perform microwave antigen retrieval with 10 mM PBS buffer pH 7.2 before commencing with IHC staining protocol.