

BRINP3 Rabbit pAb

Catalog No.: A18237

Basic Information

Observed MW

88kDa

Calculated MW

88kDa

Category

Primary antibody

Applications

ELISA,WB,IF/ICC

Cross-Reactivity

Human, Mouse, Rat

Background

This gene is overexpressed in pituitary tumors but is underexpressed in tongue squamous cell carcinomas, ulcerative colitis, and peri-implantitis. Polymorphisms that increase expression of this gene have been shown to increase vascular inflammation, and an association of this gene with myocardial infarction has been demonstrated. Finally, hypermethylation of this gene may find usefulness as a biomarker for gastric cancer. Two transcript variants encoding different isoforms have been found for this gene.

Recommended Dilutions

WB 1:500 - 1:2000

IF/ICC 1:50 - 1:200

Immunogen Information

Gene ID

339479

Swiss Prot

Q76B58

Immunogen

Recombinant fusion protein containing a sequence corresponding to amino acids 240-500 of human BRINP3 (NP_950252.1).

Synonyms

FAM5C; DBCCR1L; DBCCR1L1; BRINP3

Contact

☎ | 400-999-6126

✉ | cn.market@abclonal.com.cn

🌐 | www.abclonal.com.cn

Product Information

Source

Rabbit

Isotype

IgG

Purification

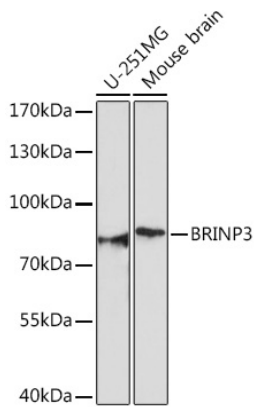
Affinity purification

Storage

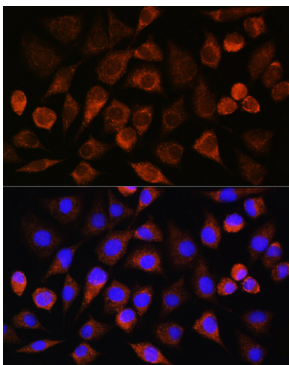
Store at -20°C. Avoid freeze / thaw cycles.

Buffer: PBS with 0.01% thimerosal, 50% glycerol, pH7.3.

Validation Data



Western blot analysis of various lysates using BRINP3 Rabbit pAb (A18237) at 1:1000 dilution.
Secondary antibody: HRP Goat Anti-Rabbit IgG (H+L) (AS014) at 1:10000 dilution.
Lysates/proteins: 25µg per lane.
Blocking buffer: 3% nonfat dry milk in TBST.
Detection: ECL Basic Kit (RM00020).
Exposure time: 90s.



Immunofluorescence analysis of L929 cells using BRINP3 Rabbit pAb (A18237) at dilution of 1:100. Secondary antibody: Cy3 Goat Anti-Rabbit IgG (H+L) (AS007) at 1:500 dilution. Blue: DAPI for nuclear staining.