

ZCCHC7 Rabbit pAb

Catalog No.: A18251 **1 Publications**

Basic Information

Observed MW

63kDa

Calculated MW

63kDa

Category

Primary antibody

Applications

ELISA, WB

Cross-Reactivity

Mouse, Rat

Background

Enables RNA binding activity. Located in cytosol and nucleolus.

Recommended Dilutions

WB 1:500 - 1:2000

Immunogen Information

Gene ID

84186

Swiss Prot

Q8N3Z6

Immunogen

Recombinant fusion protein containing a sequence corresponding to amino acids 1-231 of human ZCCHC7 (NP_115602.2).

Synonyms

AIR1; HSPC086; ZCCHC7

Contact

 | 400-999-6126

 | cn.market@abclonal.com.cn

 | www.abclonal.com.cn

Product Information

Source

Rabbit

Isotype

IgG

Purification

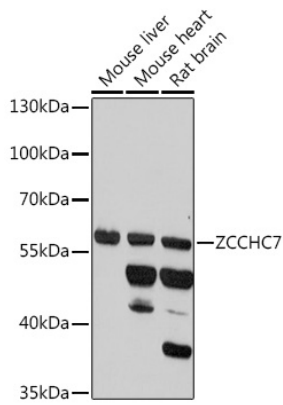
Affinity purification

Storage

Store at -20°C. Avoid freeze / thaw cycles.

Buffer: PBS with 0.01% thimerosal, 50% glycerol, pH7.3.

Validation Data



Western blot analysis of various lysates using ZCCHC7 Rabbit pAb (A18251) at 1:1000 dilution.
Secondary antibody: HRP Goat Anti-Rabbit IgG (H+L) (AS014) at 1:10000 dilution.
Lysates/proteins: 25 μ g per lane.
Blocking buffer: 3% nonfat dry milk in TBST.
Detection: ECL Enhanced Kit (RM00021).
Exposure time: 3min.