

RMND1 Rabbit pAb

Catalog No.: A18254

Basic Information

Observed MW

52kDa

Calculated MW

52kDa

Category

Primary antibody

Applications

ELISA, WB

Cross-Reactivity

Human, Mouse, Rat

Background

The protein encoded by this gene belongs to the evolutionary conserved sif2 family of proteins that share the DUF155 domain in common. This protein is thought to be localized in the mitochondria and involved in mitochondrial translation. Mutations in this gene are associated with combined oxidative phosphorylation deficiency-11. Alternatively spliced transcript variants have been found for this gene.

Recommended Dilutions

WB 1:100 - 1:500

Immunogen Information

Gene ID

55005

Swiss Prot

Q9NWS8

Immunogen

Recombinant fusion protein containing a sequence corresponding to amino acids 13-200 of human RMND1 (NP_060379.2).

Synonyms

RMD1; C6orf96; COXPD11; bA351K16; bA351K16.3; RMND1

Contact

☎ | 400-999-6126

✉ | cn.market@abclonal.com.cn

🌐 | www.abclonal.com.cn

Product Information

Source

Rabbit

Isotype

IgG

Purification

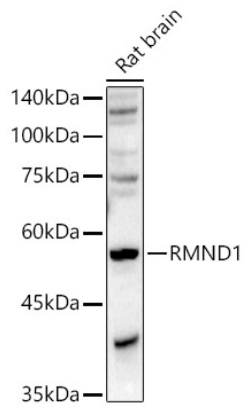
Affinity purification

Storage

Store at -20°C. Avoid freeze / thaw cycles.

Buffer: PBS with 0.05% proclin300, 50% glycerol, pH7.3.

Validation Data



Western blot analysis of Rat brain, using RMND1 antibody (A18254) at 1:500 dilution.
Secondary antibody: HRP Goat Anti-Rabbit IgG (H+L) (AS014) at 1:10000 dilution.
Lysates/proteins: 25µg per lane.
Blocking buffer: 3% nonfat dry milk in TBST.
Detection: ECL Basic Kit (RM00020).
Exposure time: 90s.