

Tulp2 Rabbit pAb

Catalog No.: A18256

Basic Information

Observed MW

60kDa

Calculated MW

63kDa

Category

Primary antibody

Applications

ELISA, WB, IHC-P

Cross-Reactivity

Human, Mouse, Rat

Background

Predicted to enable phosphoric diester hydrolase activity. Predicted to be involved in protein localization to cilium. Predicted to be located in cytoplasm and extracellular region. Predicted to be active in cilium. Is expressed in urogenital ridge. Orthologous to human TULP2 (TUB like protein 2).

Recommended Dilutions

WB 1:500 - 1:1000

IHC-P 1:50 - 1:200

Immunogen Information

Gene ID

56734

Swiss Prot

P46686

Immunogen

Recombinant fusion protein containing a sequence corresponding to amino acids 78-305 of mouse Tulp2 (NP_032833.2).

Synonyms

Pdet; Tulp2

Contact

 | 400-999-6126

 | cn.market@abclonal.com.cn

 | www.abclonal.com.cn

Product Information

Source

Rabbit

Isotype

IgG

Purification

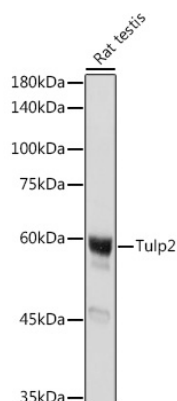
Affinity purification

Storage

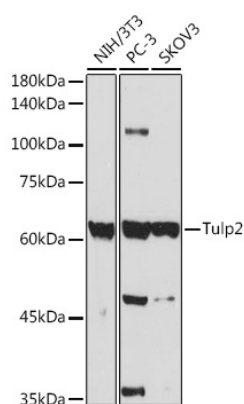
Store at -20°C. Avoid freeze / thaw cycles.

Buffer: PBS with 0.01% thimerosal, 50% glycerol, pH7.3.

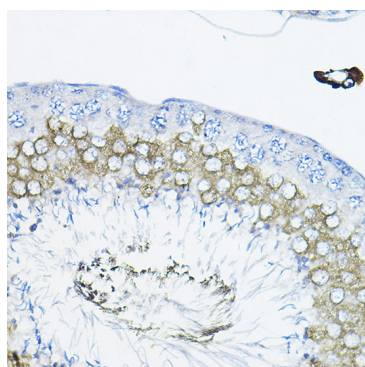
Validation Data



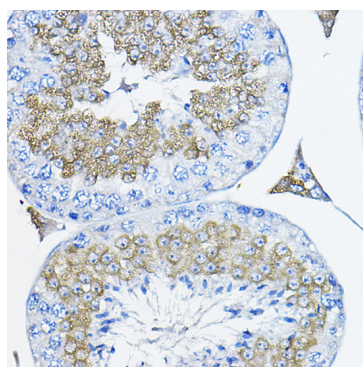
Western blot analysis of lysates from Rat testis, using Tulp2 Rabbit pAb (A18256) at 1:1000 dilution.
Secondary antibody: HRP Goat Anti-Rabbit IgG (H+L) (AS014) at 1:10000 dilution.
Lysates/proteins: 25µg per lane.
Blocking buffer: 3% nonfat dry milk in TBST.
Detection: ECL Basic Kit (RM00020).
Exposure time: 1s.



Western blot analysis of various lysates using Tulp2 Rabbit pAb (A18256) at 1:1000 dilution.
Secondary antibody: HRP Goat Anti-Rabbit IgG (H+L) (AS014) at 1:10000 dilution.
Lysates/proteins: 25µg per lane.
Blocking buffer: 3% nonfat dry milk in TBST.
Detection: ECL Enhanced Kit (RM00021).
Exposure time: 30s.



Immunohistochemistry analysis of Tulp2 in paraffin-embedded rat testis using Tulp2 Rabbit pAb (A18256) at dilution of 1:200 (40x lens). Perform high pressure antigen retrieval with 10 mM citrate buffer pH 6.0 before commencing with IHC staining protocol.



Immunohistochemistry analysis of Tulp2 in paraffin-embedded mouse testis using Tulp2 Rabbit pAb (A18256) at dilution of 1:200 (40x lens). Perform high pressure antigen retrieval with 10 mM citrate buffer pH 6.0 before commencing with IHC staining protocol.