

Mfsd2a Rabbit pAb

Catalog No.: A18288 **1 Publications**

Basic Information

Observed MW

60-70kDa

Calculated MW

59kDa

Category

Primary antibody

Applications

ELISA, WB

Cross-Reactivity

Human, Mouse, Rat

Background

Enables fatty acid transmembrane transporter activity; lysophosphatidylcholine flippase activity; and lysophospholipid:sodium symporter activity. Involved in central nervous system development; lipid transport; and transcytosis. Acts upstream of or within several processes, including photoreceptor cell development; regulation of lipid metabolic process; and retina development in camera-type eye. Located in plasma membrane. Is integral component of plasma membrane. Is expressed in several structures, including alimentary system; central nervous system; genitourinary system; integumental system; and sensory organ. Human ortholog(s) of this gene implicated in primary autosomal recessive microcephaly 15. Orthologous to human MFSD2A (major facilitator superfamily domain containing 2A).

Recommended Dilutions

WB 1:500 - 1:2000

Immunogen Information

Gene ID

76574

Swiss Prot

Q9DA75

Immunogen

Recombinant fusion protein containing a sequence corresponding to amino acids 170-245 of mouse Mfsd2a (NP_083938.2).

Synonyms

NLS1; Mfsd2; 1700018018Rik; Mfsd2a

Contact

 | 400-999-6126

 | cn.market@abclonal.com.cn

 | www.abclonal.com.cn

Product Information

Source

Rabbit

Isotype

IgG

Purification

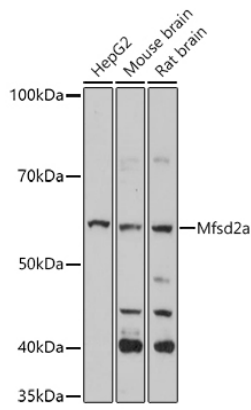
Affinity purification

Storage

Store at -20°C. Avoid freeze / thaw cycles.

Buffer: PBS with 0.01% thimerosal, 50% glycerol, pH 7.3.

Validation Data



Western blot analysis of various lysates using Mfsd2a Rabbit pAb (A18288) at 1:1000 dilution.
Secondary antibody: HRP-conjugated Goat anti-Rabbit IgG (H+L) (AS014) at 1:10000 dilution.
Lysates/proteins: 25 μ g per lane.
Blocking buffer: 3% nonfat dry milk in TBST.
Detection: ECL Basic Kit (RM00020).
Exposure time: 120s.