

DYNC1H1 Rabbit pAb

Catalog No.: A18314

Basic Information

Observed MW

532kDa

Calculated MW

532kDa

Category

Primary antibody

Applications

ELISA, WB

Cross-Reactivity

Human

Background

Dyneins are a group of microtubule-activated ATPases that function as molecular motors. They are divided into two subgroups of axonemal and cytoplasmic dyneins. The cytoplasmic dyneins function in intracellular motility, including retrograde axonal transport, protein sorting, organelle movement, and spindle dynamics. Molecules of conventional cytoplasmic dynein are comprised of 2 heavy chain polypeptides and a number of intermediate and light chains. This gene encodes a member of the cytoplasmic dynein heavy chain family.

Recommended Dilutions

WB 1:1000 - 1:5000

Immunogen Information

Gene ID

1778

Swiss Prot

Q14204

Immunogen

Recombinant fusion protein containing a sequence corresponding to amino acids 1-210 of human DYNC1H1 (NP_001367.2).

Synonyms

p22; DHC1; DNCL; DYHC; HL-3; CMT20; DHC1a; DNCH1; DNECL; Dnchc1; CDCBM13; SMALED1; DYNC1H1

Contact

☎ | 400-999-6126

✉ | cn.market@abclonal.com.cn

🌐 | www.abclonal.com.cn

Product Information

Source

Rabbit

Isotype

IgG

Purification

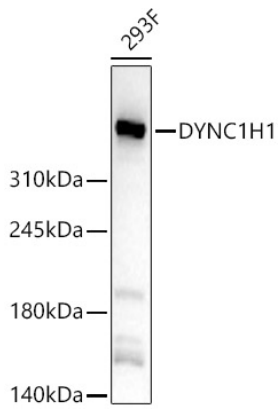
Affinity purification

Storage

Store at -20°C. Avoid freeze / thaw cycles.

Buffer: PBS with 0.01% thimerosal, 50% glycerol, pH 7.3.

Validation Data



Western blot analysis of 293F, using DYNC1H1 Rabbit pAb (A18314) at 1:2000 dilution.
Secondary antibody: HRP Goat Anti-Rabbit IgG (H+L) (AS014) at 1:10000 dilution.
Lysates/proteins: 25ug per lane.
Blocking buffer: 3% nonfat dry milk in TBST.
Detection: ECL Basic Kit (RM00020).
Exposure time: 180s.