

MT-ATP6 Rabbit pAb

Catalog No.: A18315

Basic Information

Observed MW

Calculated MW
25kDa

Category
Primary antibody

Applications
ELISA, WB, IF/ICC

Cross-Reactivity
Mouse, Rat

Background

Contributes to proton-transporting ATP synthase activity, rotational mechanism. Involved in mitochondrial ATP synthesis coupled proton transport. Part of mitochondrial proton-transporting ATP synthase complex. Implicated in Leber hereditary optic neuropathy; NARP syndrome; Parkinson's disease; multiple sclerosis; and systemic lupus erythematosus.

Recommended Dilutions

WB	1:500 - 1:2000
IF/ICC	1:50 - 1:200

Immunogen Information

Gene ID 4508	Swiss Prot P00846
------------------------	-----------------------------

Immunogen

A synthetic peptide corresponding to a sequence within amino acids 50-150 of human MT-ATP6 (YP_003024031.1).

Synonyms

ATPase6; MTATP6; ATP6; MT-ATP6

Contact

	400-999-6126
	cn.market@abclonal.com.cn
	www.abclonal.com.cn

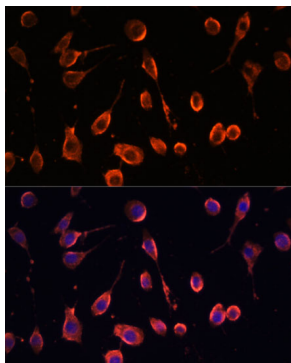
Product Information

Source Rabbit	Isotype IgG	Purification Affinity purification
-------------------------	-----------------------	--

Storage

Store at -20°C. Avoid freeze / thaw cycles.
Buffer: PBS with 0.01% thimerosal, 50% glycerol, pH7.3.

Validation Data



Immunofluorescence analysis of L929 cells using MT-ATP6 Rabbit pAb (A18315) at dilution of 1:100. Secondary antibody: Cy3 Goat Anti-Rabbit IgG (H+L) (AS007) at 1:500 dilution. Blue: DAPI for nuclear staining.