

# MT-CO3 Rabbit pAb

Catalog No.: A18318 **1 Publications**

## Basic Information

### Observed MW

Refer to figures

### Calculated MW

30kDa

### Category

Primary antibody

### Applications

WB,IHC-P,IF/ICC,ELISA

### Cross-Reactivity

Human, Mouse, Rat

## Background

Predicted to enable electron transfer activity and oxidoreduction-driven active transmembrane transporter activity. Involved in respiratory chain complex IV assembly. Part of respiratory chain complex IV. Implicated in MELAS syndrome.

## Recommended Dilutions

**WB** 1:500 - 1:2000

**IHC-P** 1:50 - 1:200

**IF/ICC** 1:50 - 1:200

**ELISA** Recommended starting concentration is 1 µg/mL. Please optimize the concentration based on your specific assay requirements.

## Immunogen Information

### Gene ID

4514

### Swiss Prot

P00414

### Immunogen

A synthetic peptide corresponding to a sequence within amino acids 101-200 of human MT-CO3 (YP\_003024032.1).

### Synonyms

COIII; MTCO3; COX3; MT-CO3

## Contact

☎ | 400-999-6126

✉ | [cn.market@abclonal.com.cn](mailto:cn.market@abclonal.com.cn)

🌐 | [www.abclonal.com.cn](http://www.abclonal.com.cn)

## Product Information

### Source

Rabbit

### Isotype

IgG

### Purification

Affinity purification

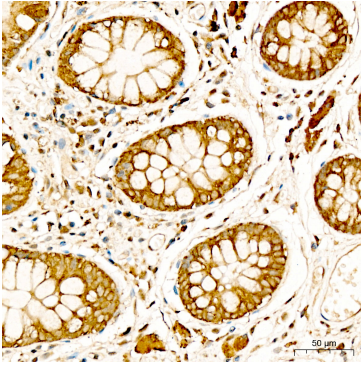
### Storage

Store at -20°C. Avoid freeze / thaw cycles.

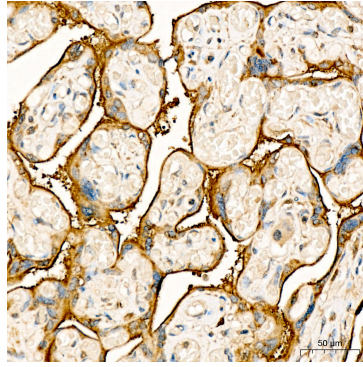
Buffer: PBS with 0.05% proclin300,50% glycerol,pH7.3.

## Validation Data

---



Immunohistochemistry analysis of paraffin-embedded Human colon using MT-CO3 Rabbit pAb (A18318) at dilution of 1:100 (40x lens). High pressure antigen retrieval performed with 0.01M Citrate Bufferr (pH 6.0) prior to IHC staining.



Immunohistochemistry analysis of paraffin-embedded Human placenta using MT-CO3 Rabbit pAb (A18318) at dilution of 1:100 (40x lens). High pressure antigen retrieval performed with 0.01M Citrate Bufferr (pH 6.0) prior to IHC staining.