

# TET3 Rabbit pAb

Catalog No.: A18319 **2 Publications**

## Basic Information

### Observed MW

179kDa

### Calculated MW

194kDa

### Category

Primary antibody

### Applications

ELISA, WB, IF/ICC

### Cross-Reactivity

Human, Mouse

## Background

Enables methyl-CpG binding activity and zinc ion binding activity. Involved in histone H3-K4 trimethylation; positive regulation of transcription by RNA polymerase II; and protein O-linked glycosylation. Predicted to be located in cytoplasm and male pronucleus. Predicted to be active in nucleus. Biomarker of esophagus squamous cell carcinoma.

## Recommended Dilutions

**WB** 1:500 - 1:2000

**IF/ICC** 1:50 - 1:200

## Immunogen Information

### Gene ID

200424

### Swiss Prot

O43151

### Immunogen

Recombinant fusion protein containing a sequence corresponding to amino acids 136-265 of TET3 (NP\_001274420.1).

### Synonyms

BEFAHRS; hCG\_40738; TET3

## Contact

 | 400-999-6126

 | [cn.market@abclonal.com.cn](mailto:cn.market@abclonal.com.cn)

 | [www.abclonal.com.cn](http://www.abclonal.com.cn)

## Product Information

### Source

Rabbit

### Isotype

IgG

### Purification

Affinity purification

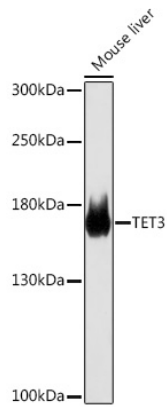
### Storage

Store at -20°C. Avoid freeze / thaw cycles.

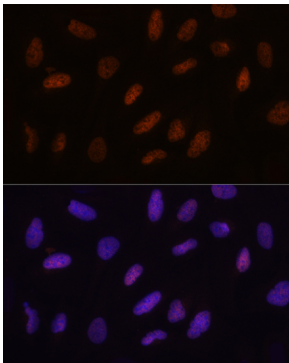
Buffer: PBS with 0.01% thimerosal, 50% glycerol, pH7.3.

## Validation Data

---



Western blot analysis of lysates from Mouse liver, using TET3 Rabbit pAb (A18319) at 1:1000 dilution.  
Secondary antibody: HRP Goat Anti-Rabbit IgG (H+L) (AS014) at 1:10000 dilution.  
Lysates/proteins: 25µg per lane.  
Blocking buffer: 3% nonfat dry milk in TBST.  
Detection: ECL Basic Kit (RM00020).  
Exposure time: 1s.



Immunofluorescence analysis of U2OS cells using TET3 Rabbit pAb (A18319) at dilution of 1:100. Secondary antibody: Cy3 Goat Anti-Rabbit IgG (H+L) (AS007) at 1:500 dilution. Blue: DAPI for nuclear staining.