

WLS Rabbit pAb

Catalog No.: A18328

Basic Information

Observed MW

70kDa

Calculated MW

62kDa

Category

Primary antibody

Applications

ELISA, WB

Cross-Reactivity

Human, Mouse, Rat

Background

Enables Wnt-protein binding activity and identical protein binding activity. Involved in positive regulation of cell communication and protein transport. Located in several cellular components, including Golgi apparatus; early endosome; and endoplasmic reticulum membrane.

Recommended Dilutions

WB 1:500 - 1:2000

Immunogen Information

Gene ID

79971

Swiss Prot

Q5T9L3

Immunogen

Recombinant fusion protein containing a sequence corresponding to amino acids 43-232 of human WLS (NP_001002292.3).

Synonyms

EVI; MRP; ZKS; GPR177; mig-14; C1orf139; WLS

Contact

 | 400-999-6126

 | cn.market@abclonal.com.cn

 | www.abclonal.com.cn

Product Information

Source

Rabbit

Isotype

IgG

Purification

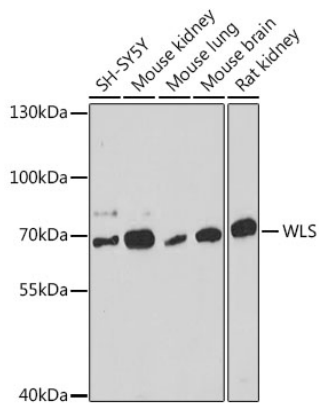
Affinity purification

Storage

Store at -20°C. Avoid freeze / thaw cycles.

Buffer: PBS with 0.01% thimerosal, 50% glycerol, pH7.3.

Validation Data



Western blot analysis of various lysates using WLS Rabbit pAb (A18328) at 1:1000 dilution.
Secondary antibody: HRP Goat Anti-Rabbit IgG (H+L) (AS014) at 1:10000 dilution.
Lysates/proteins: 25µg per lane.
Blocking buffer: 3% nonfat dry milk in TBST.
Detection: ECL Basic Kit (RM00020).
Exposure time: 90s.