

MLLT1 Rabbit pAb

Catalog No.: A18333

Basic Information

Observed MW

80kDa/62kDa

Calculated MW

62kDa

Category

Primary antibody

Applications

WB, ELISA

Cross-Reactivity

Human, Mouse, Rat

Background

Predicted to be involved in regulation of transcription, DNA-templated. Predicted to act upstream of or within negative regulation of protein kinase activity. Located in cytosol; fibrillar center; and nucleoplasm. Part of transcription elongation factor complex.

Recommended Dilutions

WB 1:500 - 1:2000

ELISA Recommended starting concentration is 1 µg/mL. Please optimize the concentration based on your specific assay requirements.

Immunogen Information

Gene ID

4298

Swiss Prot

Q03111

Immunogen

Recombinant protein (or fragment). This information is considered to be commercially sensitive.

Synonyms

ENL; LTG19; YEATS1; MLLT1

Contact

 | 400-999-6126

 | cn.market@abclonal.com.cn

 | www.abclonal.com.cn

Product Information

Source

Rabbit

Isotype

IgG

Purification

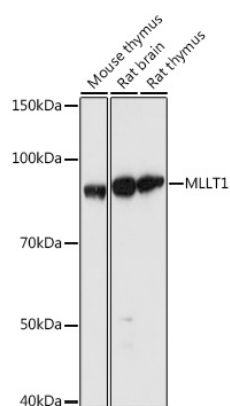
Affinity purification

Storage

Store at -20°C. Avoid freeze / thaw cycles.

Buffer: PBS with 0.01% thimerosal, 50% glycerol, pH 7.3.

Validation Data



Western blot analysis of various lysates using MLLT1 Rabbit pAb (A18333) at 1:1000 dilution.
Secondary antibody: HRP-conjugated Goat anti-Rabbit IgG (H+L) (AS014) at 1:10000 dilution.
Lysates/proteins: 25µg per lane.
Blocking buffer: 3% nonfat dry milk in TBST.
Detection: ECL Basic Kit (RM00020).
Exposure time: 5s.