

# TLE4 Rabbit pAb

Catalog No.: A18345

## Basic Information

### Observed MW

84kDa

### Calculated MW

84kDa

### Category

Primary antibody

### Applications

ELISA, WB

### Cross-Reactivity

Rat

## Background

Predicted to enable transcription corepressor activity. Predicted to be involved in negative regulation of canonical Wnt signaling pathway. Predicted to act upstream of or within Wnt signaling pathway; cellular response to leukemia inhibitory factor; and negative regulation of transcription by RNA polymerase II. Located in nucleoplasm. Part of beta-catenin-TCF complex.

## Recommended Dilutions

WB 1:500 - 1:2000

## Immunogen Information

### Gene ID

7091

### Swiss Prot

Q04727

### Immunogen

Recombinant fusion protein containing a sequence corresponding to amino acids 173-243 of human TLE4 (NP\_001269677).

### Synonyms

ESG; BCE1; ESG4; GRG4; BCE-1; Grg-4; E(spl); E(spl); TLE4

## Contact

 | 400-999-6126

 | [cn.market@abclonal.com.cn](mailto:cn.market@abclonal.com.cn)

 | [www.abclonal.com.cn](http://www.abclonal.com.cn)

## Product Information

### Source

Rabbit

### Isotype

IgG

### Purification

Affinity purification

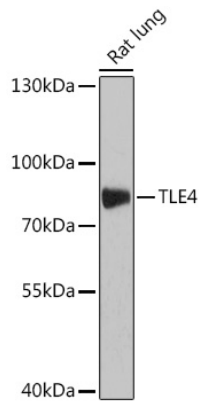
### Storage

Store at -20°C. Avoid freeze / thaw cycles.

Buffer: PBS with 0.01% thimerosal, 50% glycerol, pH7.3.

## Validation Data

---



Western blot analysis of extracts of Rat lung, using TLE4 antibody (A18345) at 1:1000 dilution.  
Secondary antibody: HRP Goat Anti-Rabbit IgG (H+L) (AS014) at 1:10000 dilution.  
Lysates/proteins: 25 $\mu$ g per lane.  
Blocking buffer: 3% nonfat dry milk in TBST.  
Detection: ECL Basic Kit (RM00020).  
Exposure time: 180s.