

DIP2C Rabbit pAb

Catalog No.: A18352

Basic Information

Observed MW

155kDa

Calculated MW

171kDa

Category

Primary antibody

Applications

ELISA, WB, IF/ICC

Cross-Reactivity

Human, Mouse, Rat

Background

This gene encodes a member of the disco-interacting protein homolog 2 family. The protein shares strong similarity with a Drosophila protein which interacts with the transcription factor disco and is expressed in the nervous system.

Recommended Dilutions

WB	1:500 - 1:2000
IF/ICC	1:50 - 1:200

Immunogen Information

Gene ID

22982

Swiss Prot

Q9Y2E4

Immunogen

Recombinant fusion protein containing a sequence corresponding to amino acids 100-260 of human DIP2C (NP_055789.1).

Synonyms

KIAA0934; DIP2C

Contact

 | 400-999-6126

 | cn.market@abclonal.com.cn

 | www.abclonal.com.cn

Product Information

Source

Rabbit

Isotype

IgG

Purification

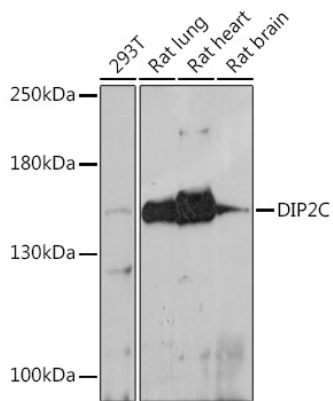
Affinity purification

Storage

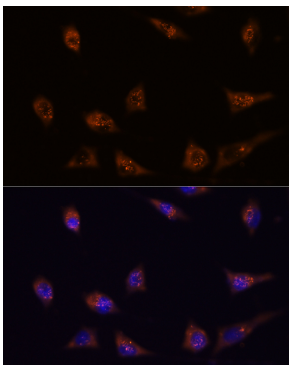
Store at -20°C. Avoid freeze / thaw cycles.

Buffer: PBS with 0.01% thimerosal, 50% glycerol, pH7.3.

Validation Data



Western blot analysis of various lysates using DIP2C Rabbit pAb (A18352) at 1:1000 dilution. Secondary antibody: HRP Goat Anti-Rabbit IgG (H+L) (AS014) at 1:10000 dilution. Lysates/proteins: 25µg per lane. Blocking buffer: 3% nonfat dry milk in TBST. Detection: ECL Enhanced Kit (RM00021). Exposure time: 90s.



Immunofluorescence analysis of L929 cells using DIP2C Rabbit pAb (A18352) at dilution of 1:100. Secondary antibody: Cy3 Goat Anti-Rabbit IgG (H+L) (AS007) at 1:500 dilution. Blue: DAPI for nuclear staining.