

# PRK2/PKN2 Rabbit pAb

Catalog No.: A18373

## Basic Information

### Observed MW

140kDa

### Calculated MW

112kDa

### Category

Primary antibody

### Applications

WB,ELISA

### Cross-Reactivity

Mouse, Rat

## Background

Enables RNA polymerase binding activity; histone deacetylase binding activity; and protein serine/threonine kinase activity. Involved in several processes, including apical junction assembly; positive regulation of cell cycle; and positive regulation of viral genome replication. Located in several cellular components, including cleavage furrow; cytoskeleton; and midbody.

## Recommended Dilutions

**WB** 1:500 - 1:2000

**ELISA** Recommended starting concentration is 1 µg/mL. Please optimize the concentration based on your specific assay requirements.

## Immunogen Information

### Gene ID

5586

### Swiss Prot

Q16513

### Immunogen

Synthetic peptide. This information is considered to be commercially sensitive.

### Synonyms

PAK2; PRK2; STK7; Pak-2; PRKCL2; PRO2042; PRK2/PKN2

## Contact

 | 400-999-6126

 | [cn.market@abclonal.com.cn](mailto:cn.market@abclonal.com.cn)

 | [www.abclonal.com.cn](http://www.abclonal.com.cn)

## Product Information

### Source

Rabbit

### Isotype

IgG

### Purification

Affinity purification

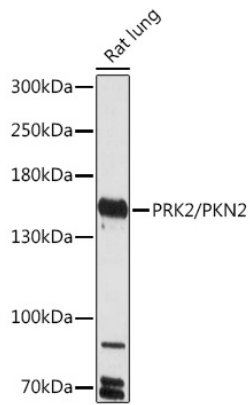
### Storage

Store at -20°C. Avoid freeze / thaw cycles.

Buffer: PBS with 0.01% thimerosal, 50% glycerol, pH7.3.

## Validation Data

---



Western blot analysis of lysates from Rat lung, using PRK2/PRK2/PKN2 Rabbit pAb (A18373) at 1:1000 dilution.

Secondary antibody: HRP-conjugated Goat anti-Rabbit IgG (H+L) (AS014) at 1:10000 dilution.

Lysates/proteins: 25µg per lane.

Blocking buffer: 3% nonfat dry milk in TBST.

Detection: ECL Basic Kit (RM00020).

Exposure time: 60s.